

EMIO-200SA-MP01E

2-Ch SATA III Module

Datasheet

CONTENTS

1. Overview	4
2. Electrical Features	5
3. Environmental Features	5
4. Block Diagram	6
5. Pin Assignment and Description	7
5.1 Connector Location	7
5.2 SATA port, SATA1 and SATA2	7
6. Physical Dimension	8
Appendix I: Part Number Table	9

Revision History

Rev.	Date	History
0.1	2014/8/11	1. 1 st draft

Advantech reserves the right to make changes without further notice to any products or data herein to improve reliability, function, or design. Information furnished by Advantech is believed to be accurate and reliable. However, Advantech does not assure any liability arising out of the application or use of this information, nor the application or use of any product or circuit described herein, neither does it convey any license under its patent rights nor the rights of others.

Copyright © 1983-2014 Advantech Co., Ltd. All rights reserved.

1. Overview

Advantech EMIO-200SA module is a family of PCIe to 2-Ch SATA port devices. This model, EMIO-200SA, provides a simple method of adapting two SATA III devices to a modern PCIe x 1 port. This is accomplished by incorporating the industry standard PCIe bridge chip.

The EMIO-200SA module is compatible with all types of Serial ATA devices, including hard drives (HDDs), Solid State Drives (SSD), and optical drives (CD/DVD/BD). A versatile solution for storage applications.

2. Electrical Features

- PCI Express Base Specification Rev. 2.0
- PCI Express Card Electromechanical Rev. 2.0
- Serial ATA AHCI Spec. Rev.1.3
- Serial ATA Revision 3.0
- One lane PCI Express for 2.5 and 5GHz signaling
- SSC support
- ECRC and Advanced Error Reporting capability
- 2 ports Serial ATA PHY for 1.5, 3.0 and 6.0GHz signaling
- Support IDE/AHCI mode
- Support Native Command Queue (NCQ)
- Support Gen1m and Gen2m SATA PHY
- Support Port Mult

3. Environmental Features

■ Temperature Ranges

- Operating : 0°C ~ 70°C
- Storage : -40°C ~ 85°C

■ Humidity

- 25% ~ 95%, 40°C

■ Random Vibration Test

- 5 - 500Hz, PSD 0.028G²/Hz, 3.5Grms
- 3 axes, 1 hr/per axis

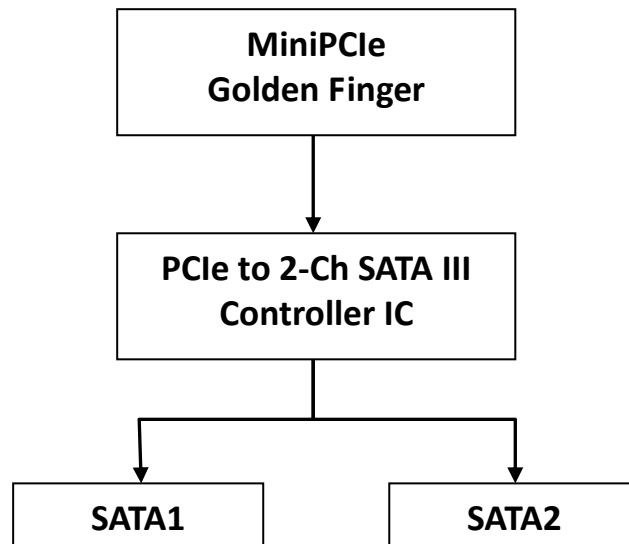
■ Acquired RoHS Certificate

■ Dimension : 50.95 mm x 30 mm x 15 mm

■ Weight : 30 g

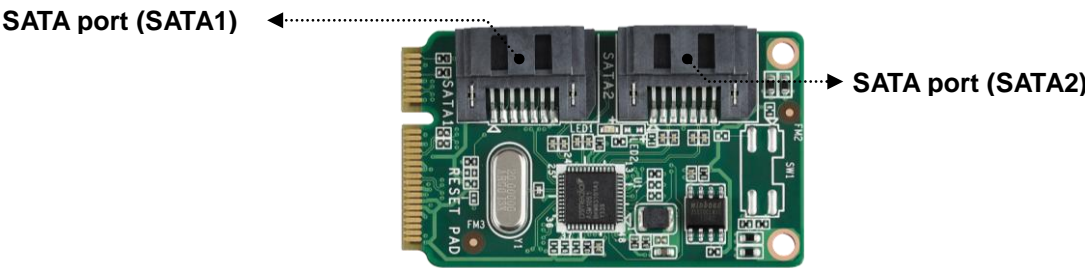
4. Block Diagram

Below Figure shows the operation of Advantech EMIO-200SA 2-Ch SATA III module from the system level, including the major hardware blocks.



5. Pin Assignment and Description

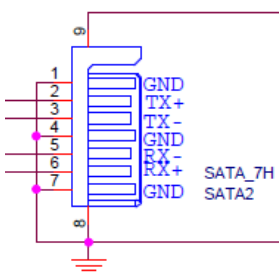
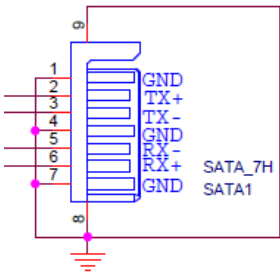
5.1 Connector Location



5.2 SATA port, SATA1 and SATA2

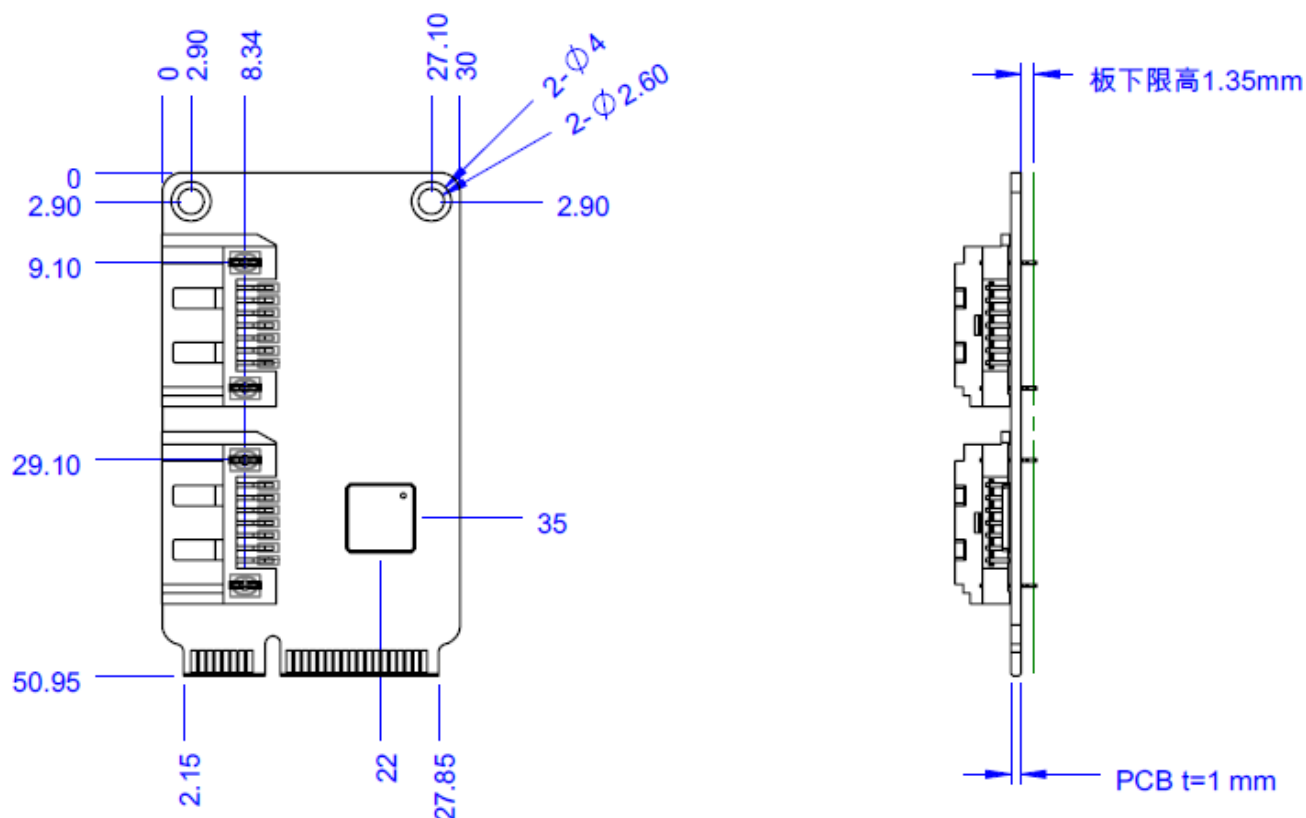
The SATA port, SATA1 and SATA2, is a Wafer Box 7P 90D connector matching side connector for SATA signal output. The pins are numbered as shown in the table below.

SATA1 Pin #	Signal Name	SATA2 Pin #	Signal Name
1	GND	1	GND
2	SATA1 TX+	2	SATA2 TX+
3	SATA1 TX-	3	SATA2 TX-
4	GND	4	GND
5	SATA1 RX-	5	SATA2 RX-
6	SATA1 RX+	6	SATA2 RX+
7	GND	7	GND



6. Physical Dimension

EMIO-200SA PCIe to 2-Ch SATA III module (Unit: mm)



Appendix I: Part Number Table

Product Description	Advantech P/N
Advantech EMIO-200SA, PCIe to SATA III module, 2-Ch, (0~70°C)	EMIO-200SA-MP01E