

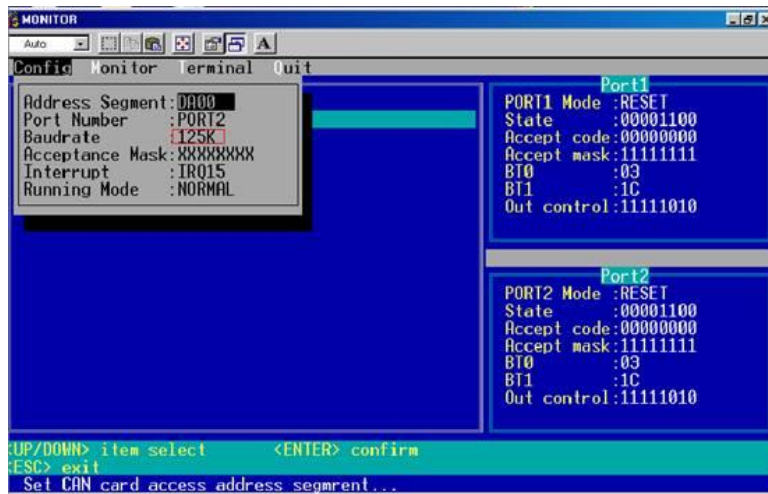
Advantech AE Technical Share Document

Date	2015 / 6 / 5	SR#	1-2031440160
Category	<input checked="" type="checkbox"/> FAQ <input type="checkbox"/> SOP	Related OS	DOS 98
Abstract	How to do Loop Test on ISA CAN card in DOS		
Keyword	AdvCAN, CAN port, Loop test, DOS		
Related Product	PCL-841, PCM-3680		

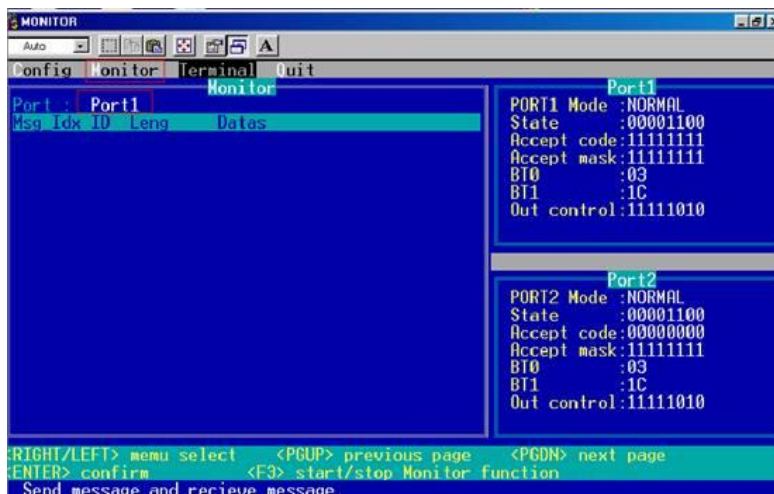
■ **Brief Solution - Step by Step:**

This assume the hardware configuration is OK for test.

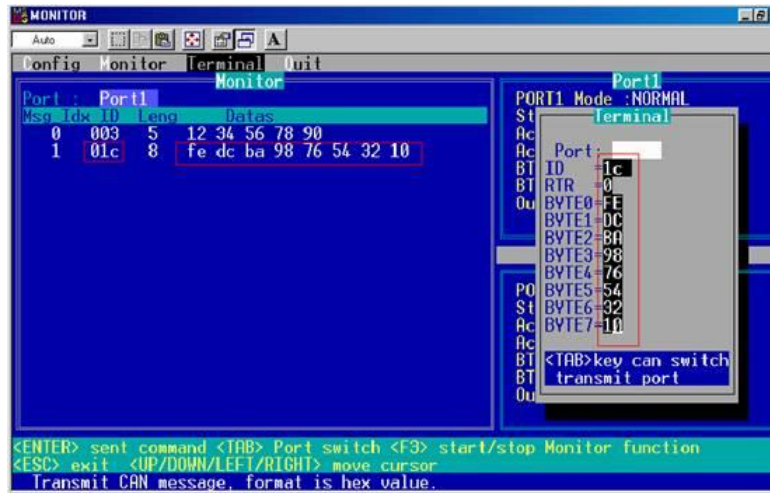
1. De-patch the driver pack.
2. There is an execution file "MONITOR.exe" in the folder [\\PCL841\Utility](#)
3. Enter MONITOR.exe.
4. Set the baud rate, IRQ and Address segment in the Config Tab. The address segment must be identical as the setting on board. Otherwise, the configuration will fail.



5. In *Monitor* tab, set the port you want to monitor.



6. In *Terminal* tab, set the information you want to transmit



7. If test fail, please make sure all your setting in IRQ and Address is available in this computer.

■ **Reference:**