

Advantech AE Technical Share Document

Date	2015 / 03 / 20	SR#	
Category	■ FAQ □ SOP	Related OS	Win7/ WinXP
Abstract	Panel Express Startup Manual		
Keyword	Panel Express		
Related Product	Panel Express		

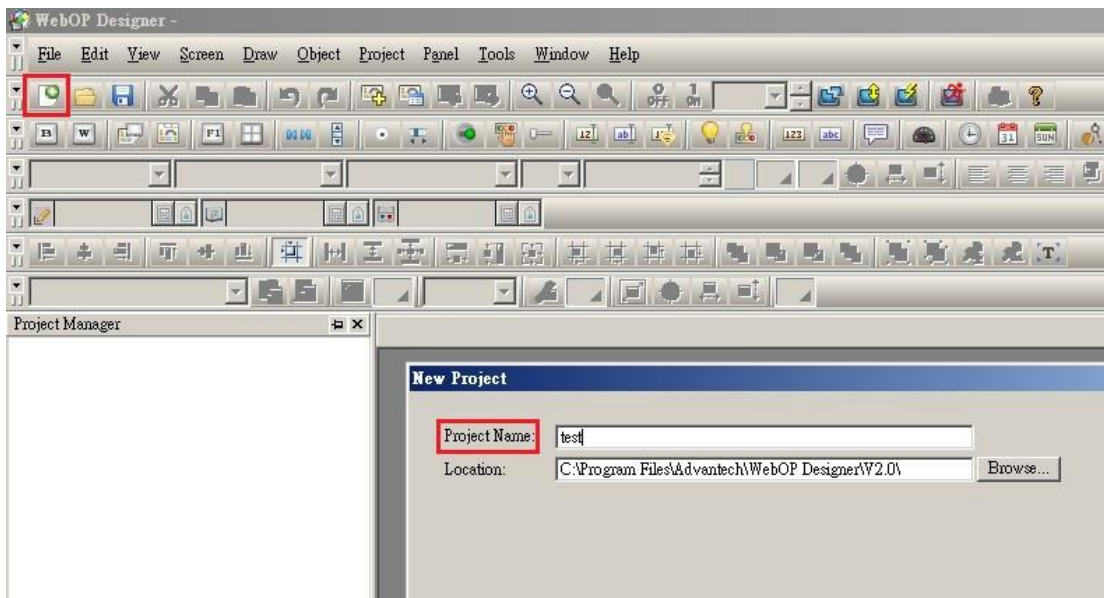
■ Problem Description:

Panel Express Startup Manual

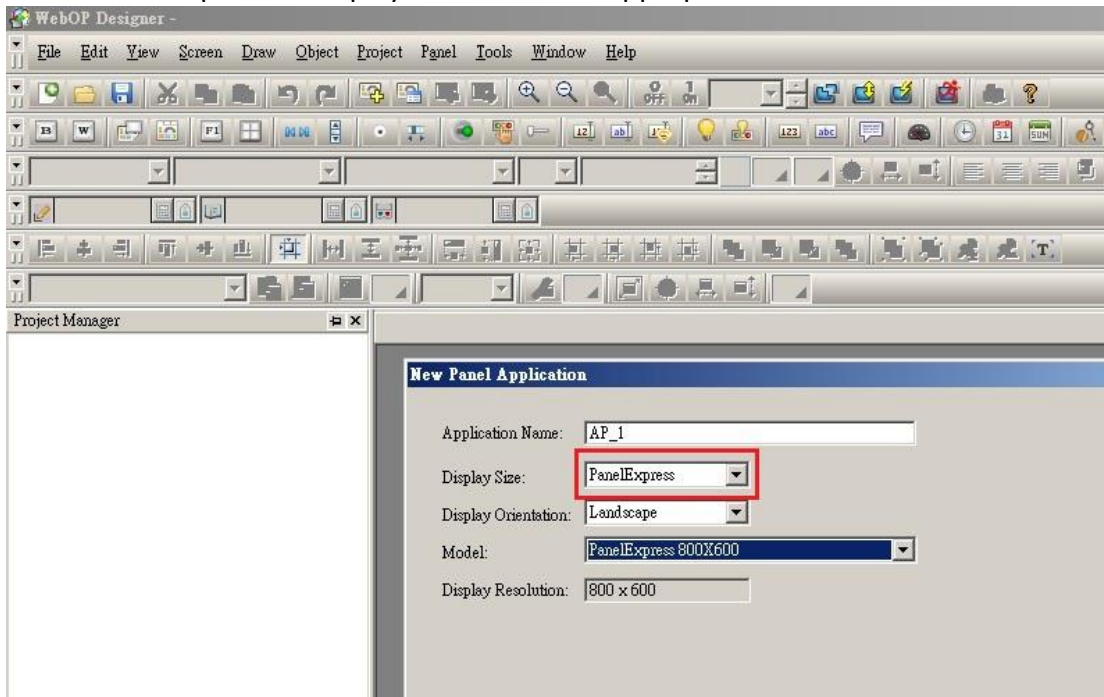
■ Brief Solution - Step by Step:

Notice: before you follow the manual. Please make sure the version of WebOP designer and Panel Express is same.

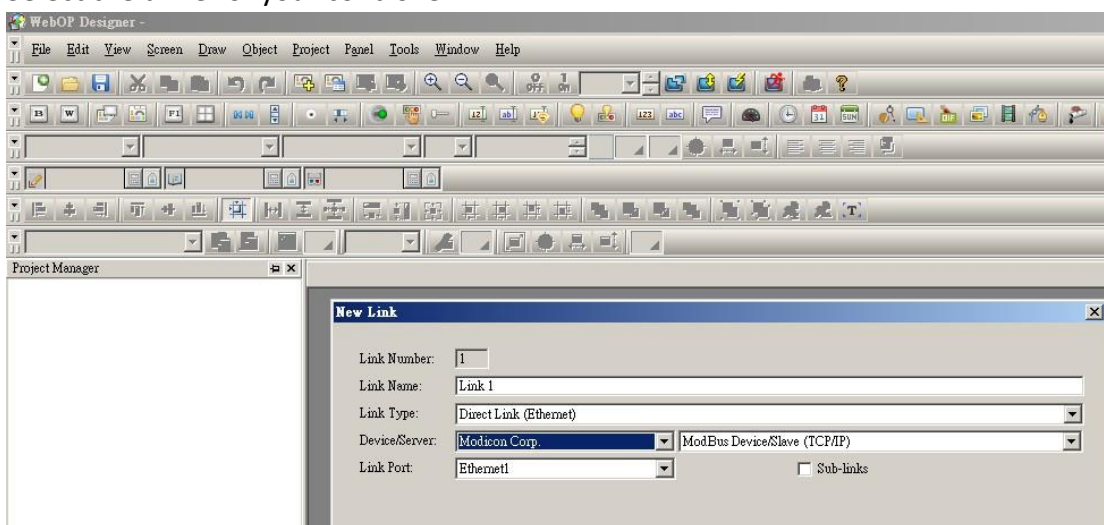
1. Create new project in WebOP Designer.



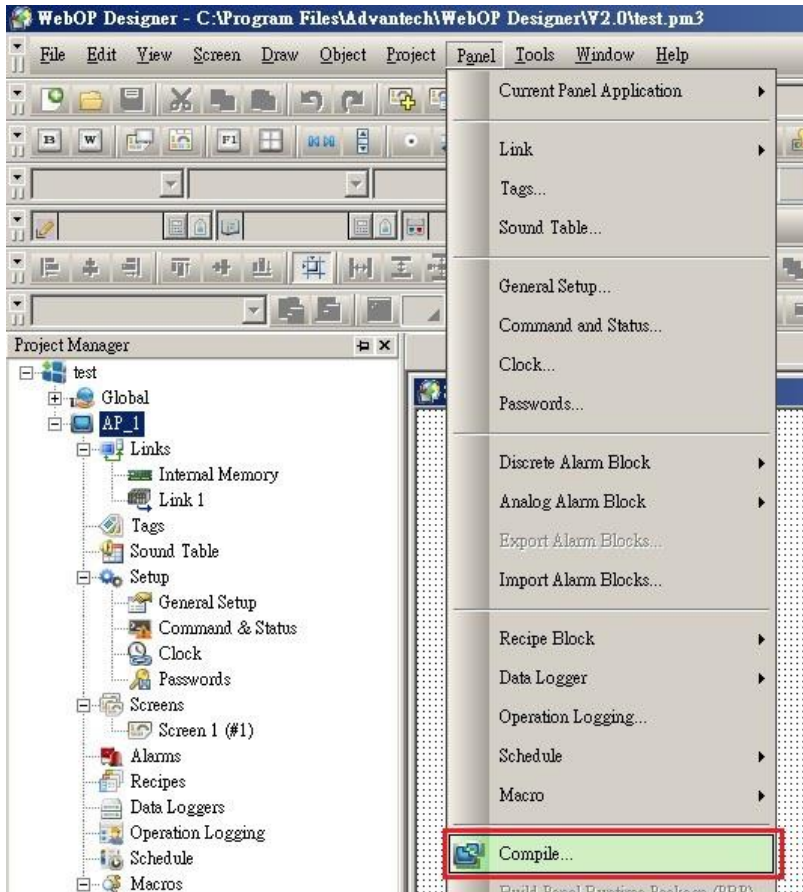
2. Select Panel Express as Display Size and select appropriate resolution.



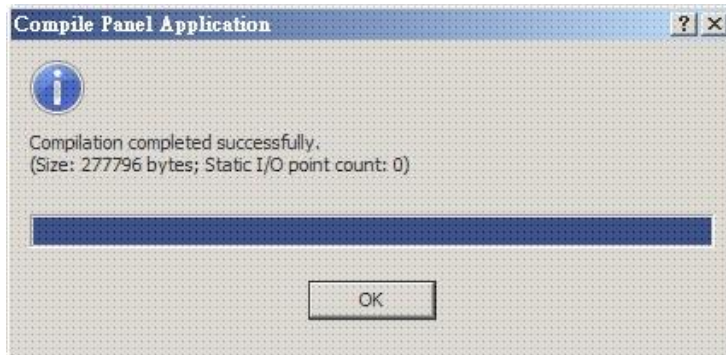
3. Select the driver of your controller.



4. Save and compile the project.



5. Confirm if the project could be compiled successfully.



6. Run PanelExpress



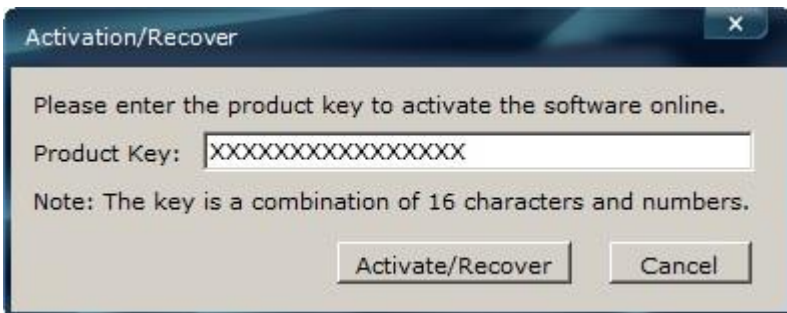
7.



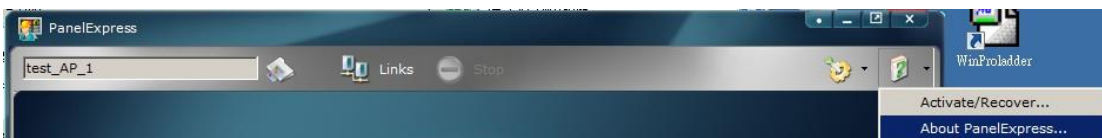
8. Click Activate to register software



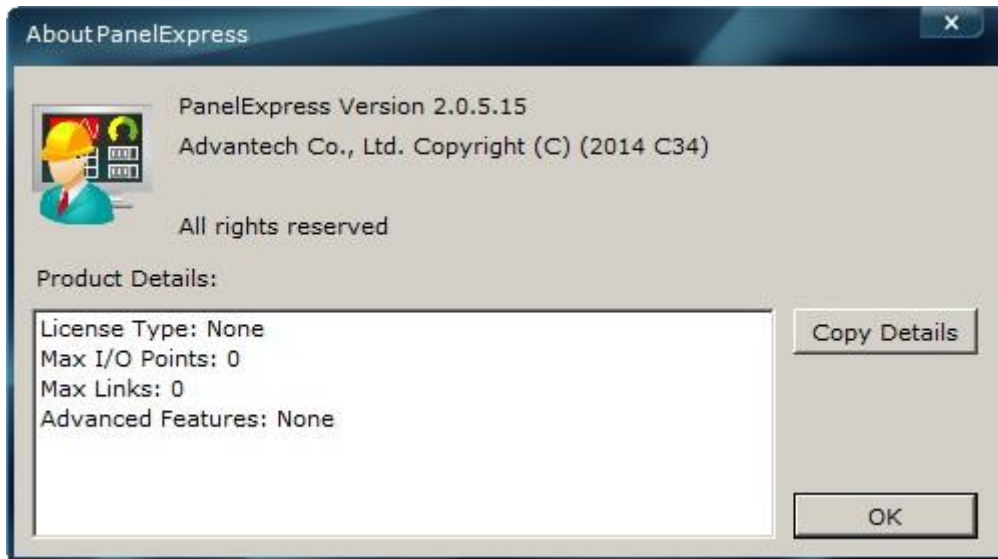
9. Enter your KEY (make sure you have internet ability because the registration will be verified on server)



10. Click about Panel Express



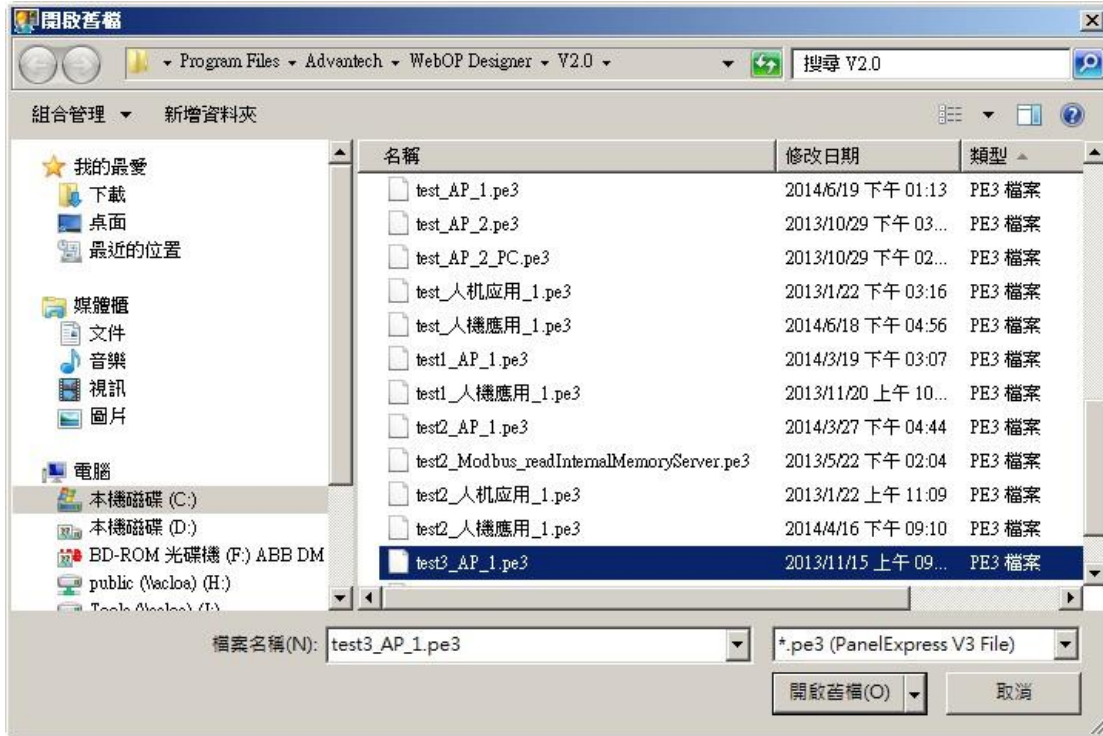
11. Confirm the Max I/O points if it's correct according to your KEY.



12. Click Open



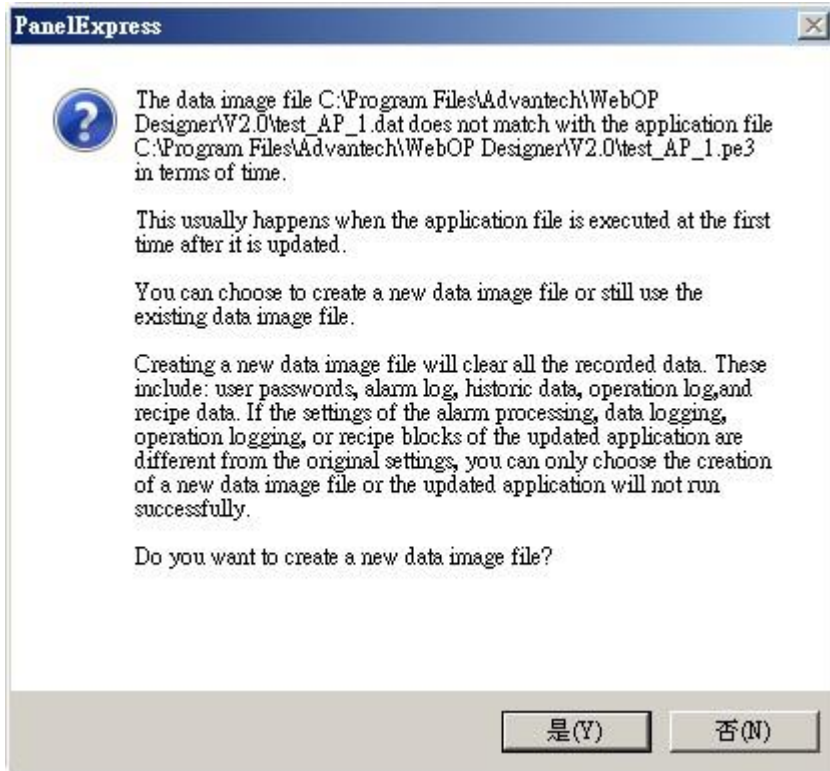
13. Select your **pe3** file. For example: if your project name is “**test**”, the pe3 file should be “**test**_AP_1.pe3”



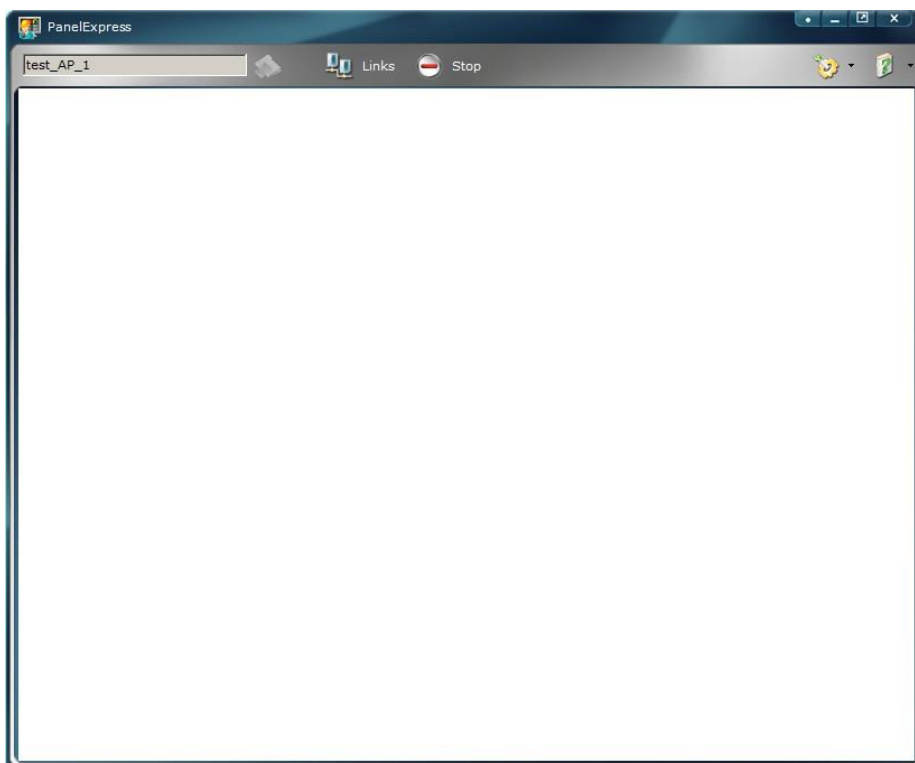
14. Click RUN



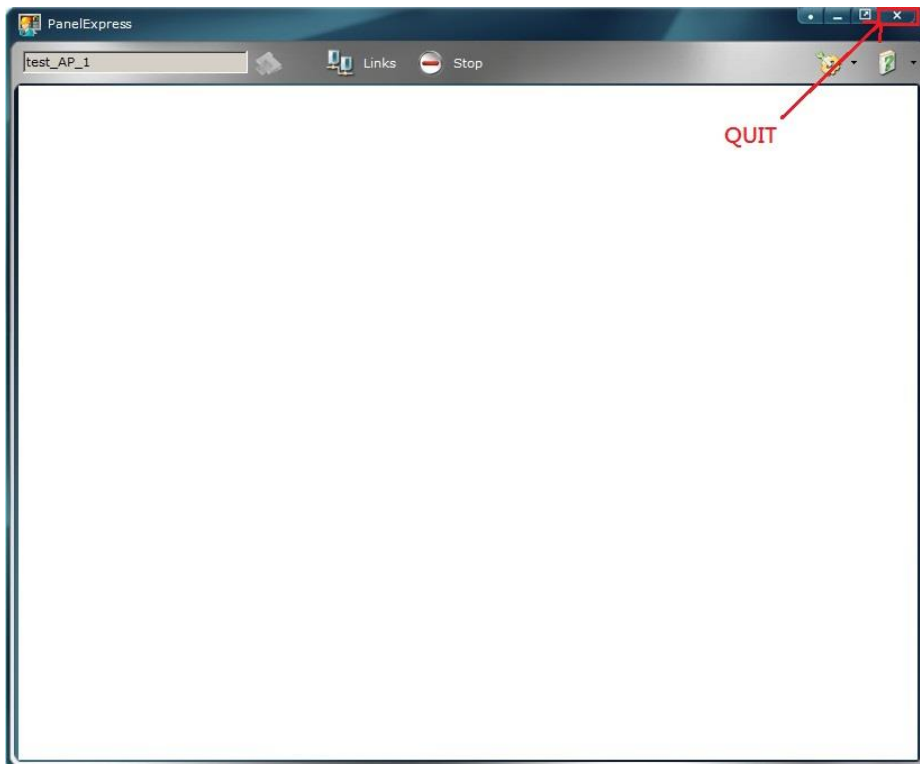
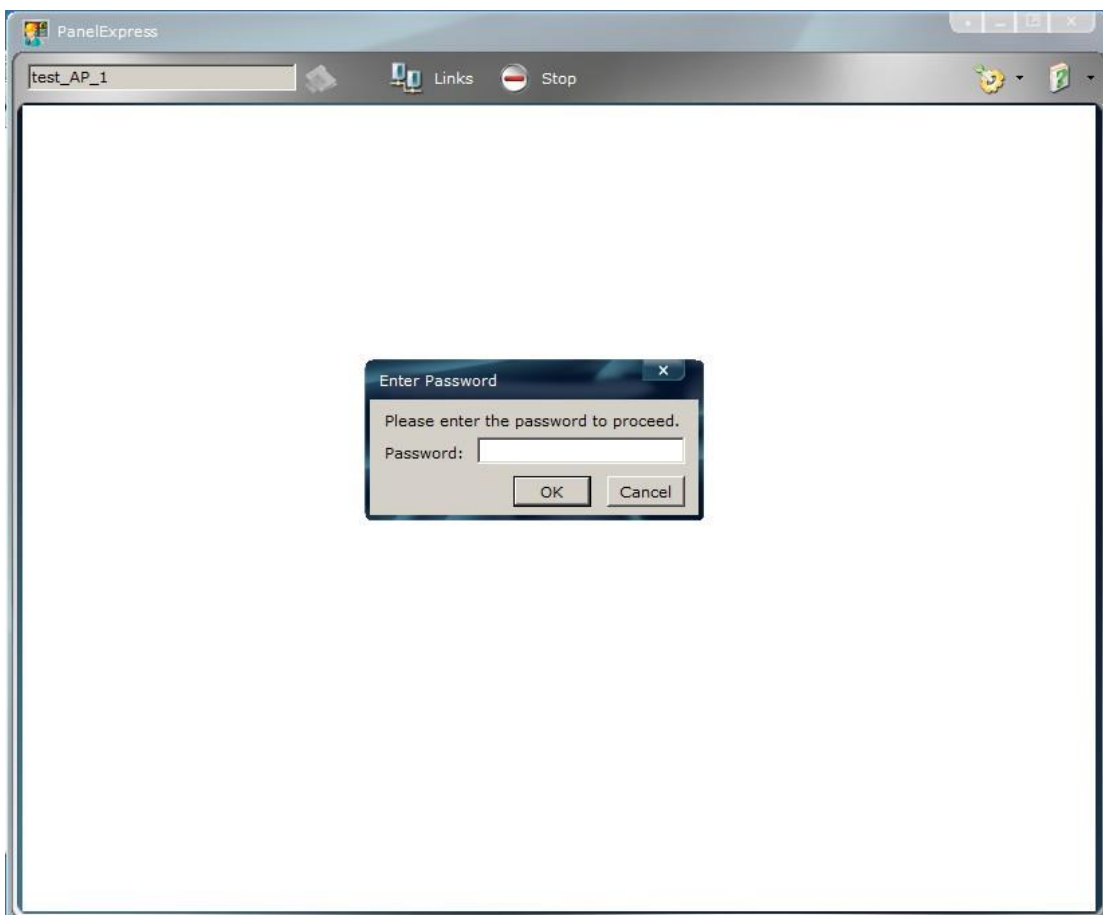
15. Click YES to create new image file.



16. Run AP successfully.



17. Quit AP.

18. Before end the program. You need to enter development password.
(default 00000000 ; nine of 0's)

■ **Reference:**

N/A