

## Advantech AE Technical Share Document

<b>Date</b>	2015 / 04/10	<b>SR#</b>	1-2040446401
<b>Category</b>	■ FAQ □ SOP	<b>Related OS</b>	WinCE5
<b>Abstract</b>	How to change IP address setting of PAC WinCE5 platform		
<b>Keyword</b>	IP address, PAC, ADAM, APAX, WinCE5		
<b>Related Product</b>	APAX-5520, APAX-5522, APAX-5620, APAX-6572 ADAM-5550, ADAM-5560		

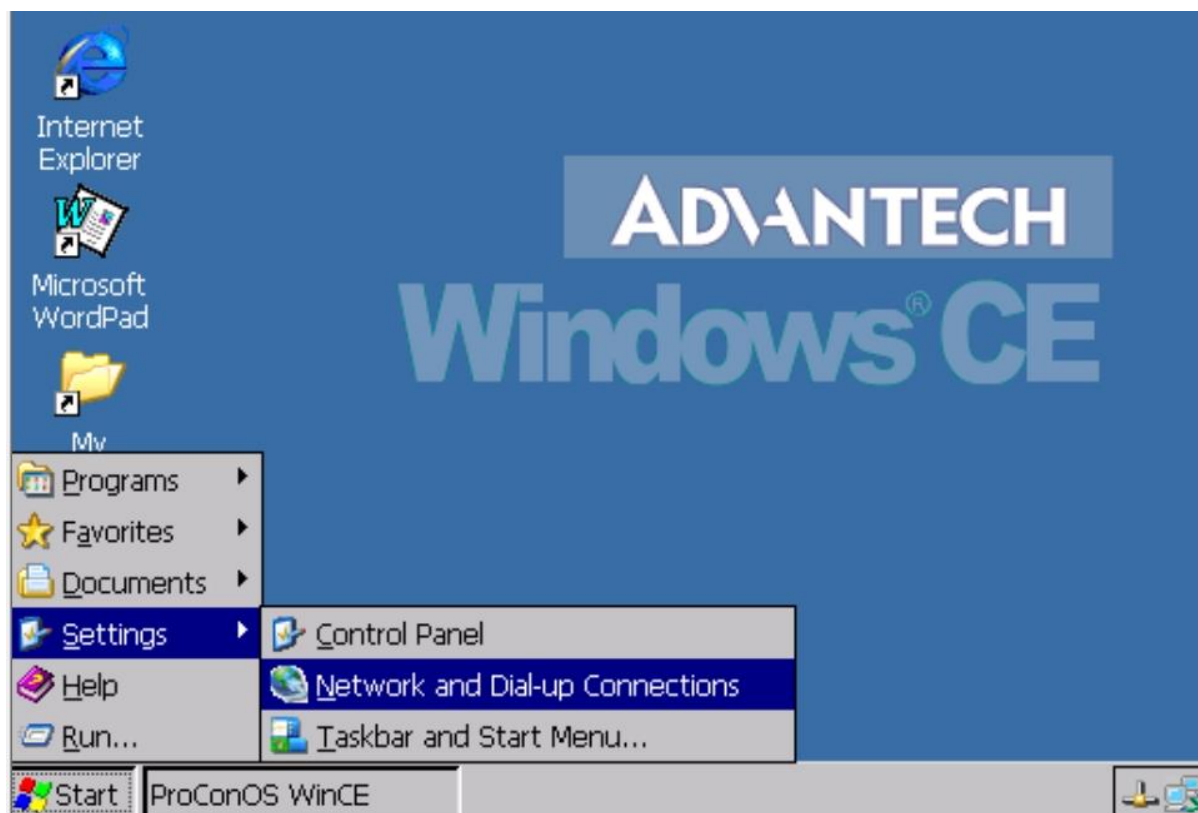
### [Problem]

How to change IP address setting of PAC WinCE5 platform

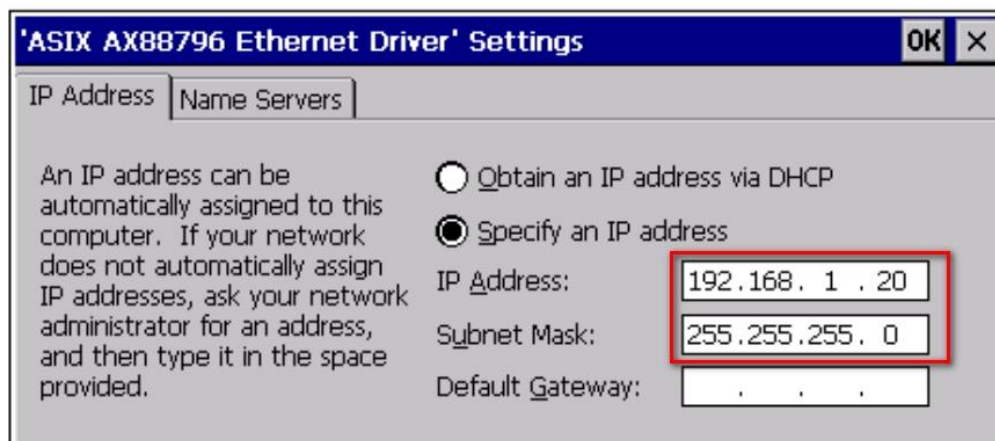
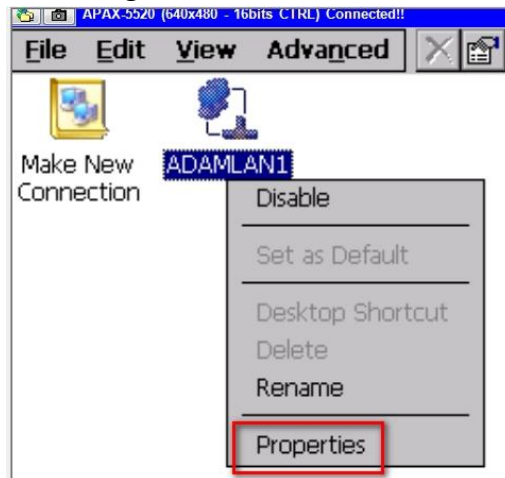


### [Solution]

1. Execute the Network setting from the Start->Settings->Network and Dial-up Connections



- Click the LAN properties to change the IP address



- After the IP address setting, you need to save the change to the registry to ensure the IP address will be keep when the next boot up of system.

