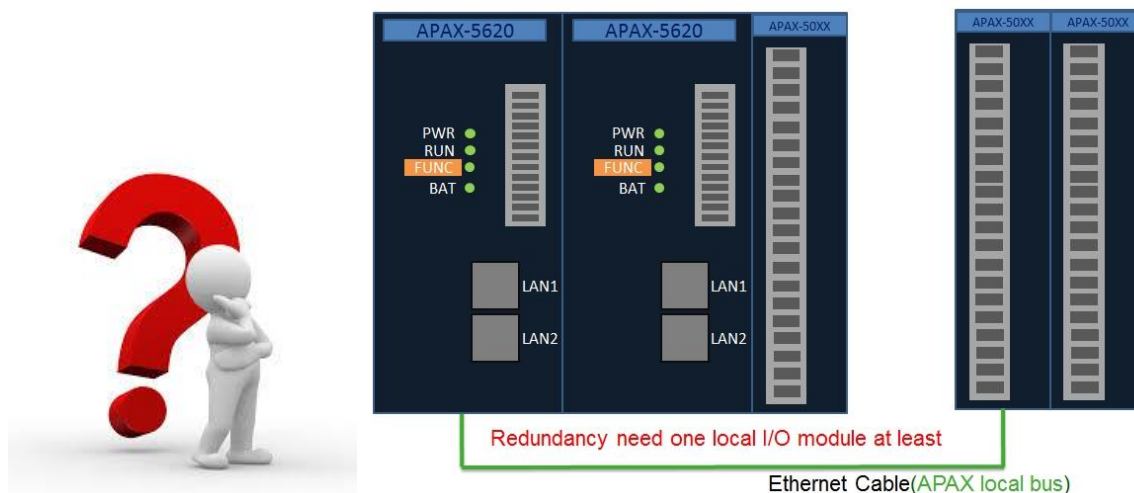


Advantech AE Technical Share Document

Date	2015 / 04 / 10	SR#	1-2040634481
Category	■ FAQ □ SOP	Related OS	WinCE5
Abstract	How to set redundant function in APAX-5620KW		
Keyword	Redundant, APAX-5620KW, ProconOS		
Related Product	APAX-5620KW		

[Problem]

How to set redundant function in APAX-5620KW?



[Solution]

1. Because the redundant function is the new function of APAX-5620KW, first you need to check the versions of OS image, ProconOS, IO library, DSP firmware, FPGA firmware that can support the redundant function or not.

**CHECK
PLEASE!**

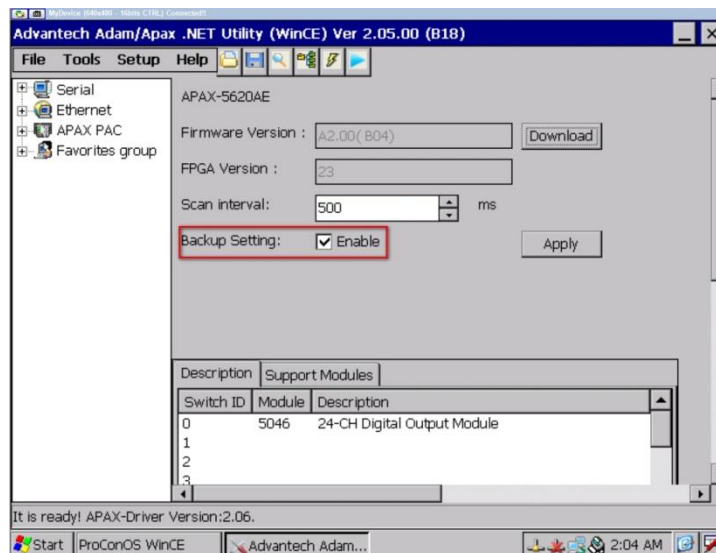


WinCE5 OS image	≥	V2.04 B691
ProconOS	≥	V4.00.78
IO library	≥	V2.06
DSP firmware	≥	A2.00 B04
FPGA firmware	≥	23
KW Multiprog	≥	5.35 V14

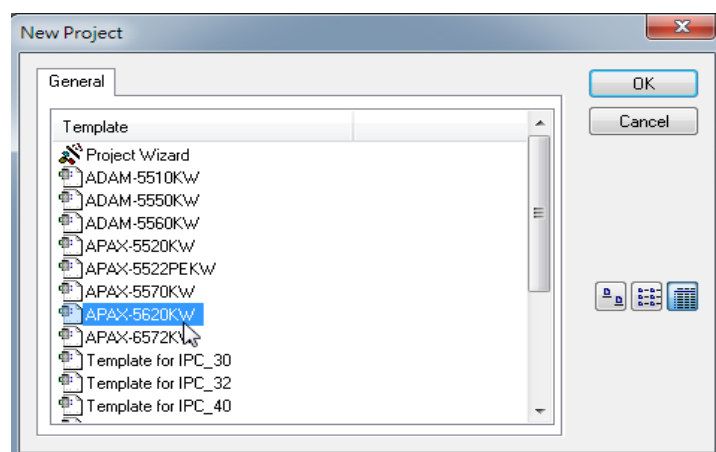
- Adjust the hardware switch SW1 of both APAX-5620KW and you can determine which one is default primary.

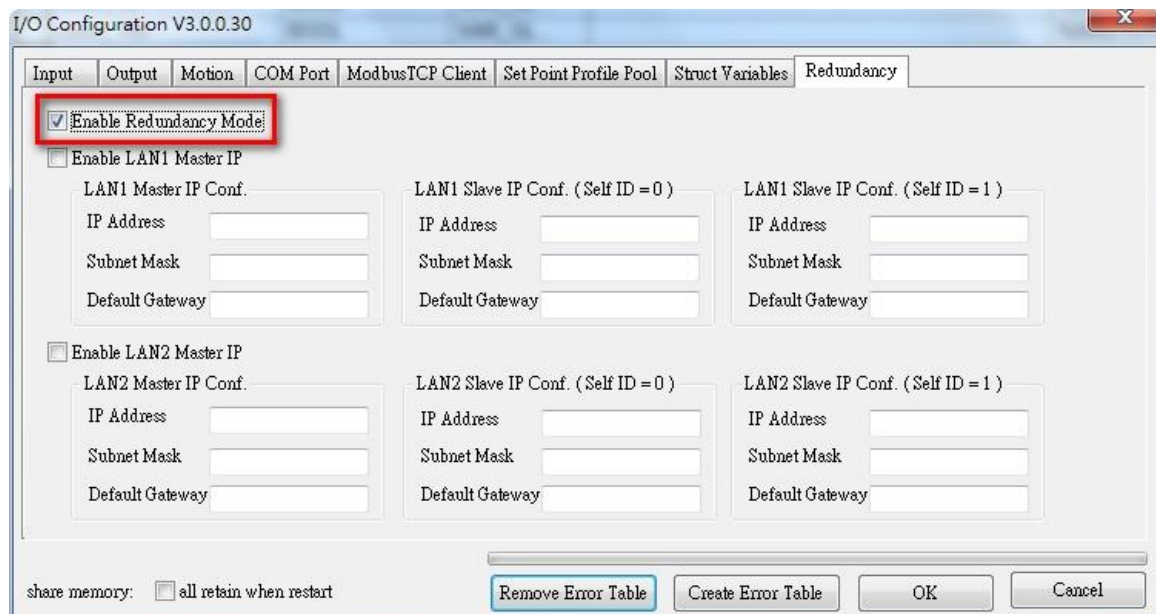
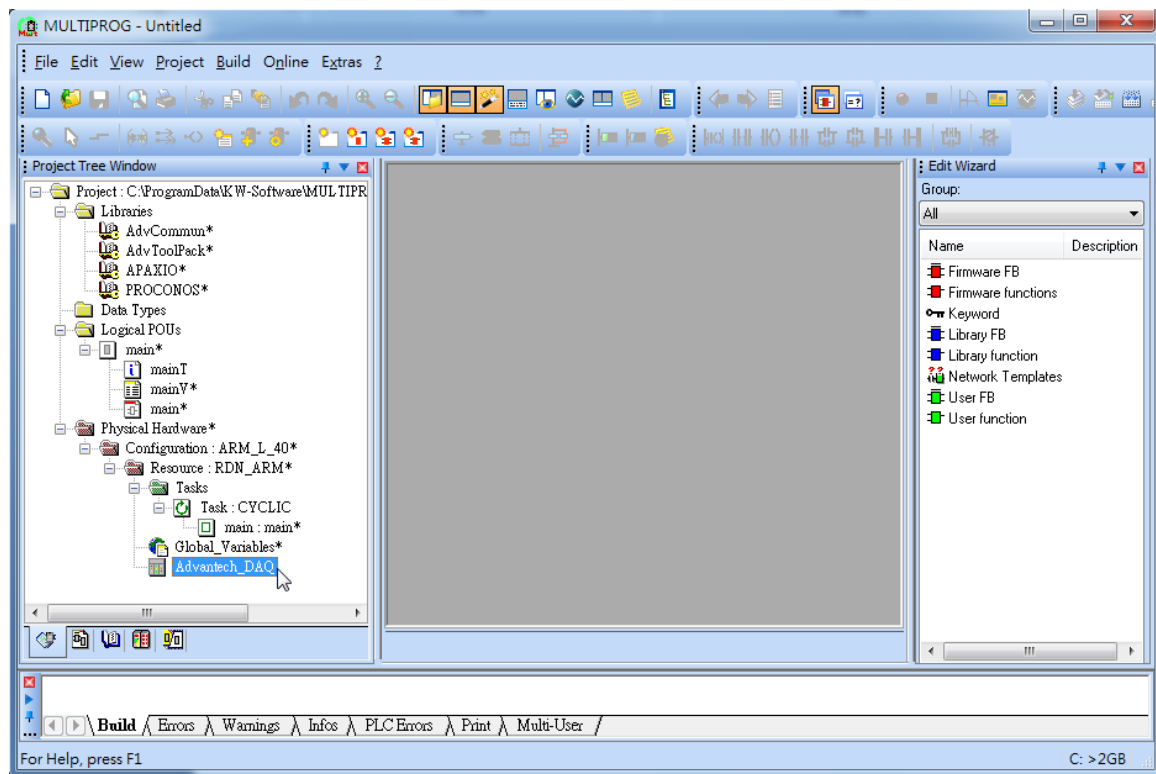
ID Address Settings(SW1)	ID Address
<div>ON</div> <div>1</div>	<div>ID:0</div> <div>High priority to be the Primary</div>
<div>ON</div> <div>1</div>	<div>ID:1</div>

- Please check “backup setting” option is “enable” by using APAX .NET utility. This setting will be effective when next reboot.



- Create the new APAX-5620KW template in KW Multiprog and enable redundancy mode in Advantech DAQ before download project.





5. Notice & hint of APAX-5620KW redundant system

- ✧ There must have more than one I/O module when starting APAX redundancy.
- ✧ Modbus TCP server of the APAX redundancy, the primary and the secondary controller are both working at the same time.
- ✧ Modbus RTU master/slave of the APAX redundancy, only the master controller is working.

- ✧ This redundant system only supports one task and task interval time recommend not less than 200ms.
- ✧ The boot project of the primary controller must be the same as of the secondary controller to pass the check sum function.
- ✧ APAX-5620KW only supports redundant function and not supports BackupSys function after ProconOS V4.00.69.
- ✧ APAX Redundant system not supports motion and FBs as Adv commun FB, Adv toolpack FB, Apaxio FB.
- ✧ If users want to sync FB data, the “FB sync data” must be set to share memory manually.
- ✧ If the redundancy share IP is enable, the client will disconnect to the sharp IP about 10 sec when switch over because of the Master controller doing IP change.