

Advantech AE Technical Share Document

| | | | |
|-----------------|---|------------|--------------|
| Date | 2015/04/08 | SR# | 1-2046530301 |
| Category | ■FAQ □SOP | Related OS | N/A |
| Abstract | ADAM-60XX and ADAM-62XX_How to use the AuxFlag in GCL | | |
| Keyword | ADAM-60XX, ADAM-62XX, GCL, Internal Flag, AuxFlag | | |
| Related Product | ADAM-60XX and ADAM-62XX | | |

■ Problem Description:

This document explain how to use the internal flag(AuxFlag) to control the GCL logic.

■ Brief Solution - Step by Step:

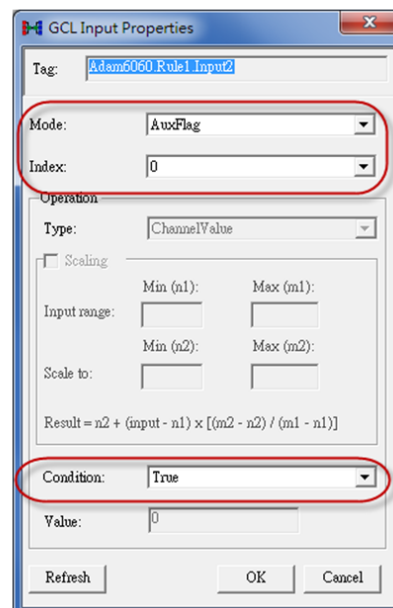
ADAM-60XX and ADAM-62XX series have 16 internal flags (digital types) that could be used to control the status of GCL.

User can used controller or HMI to control the status of these flags and then make the GCL logic become effective or not.

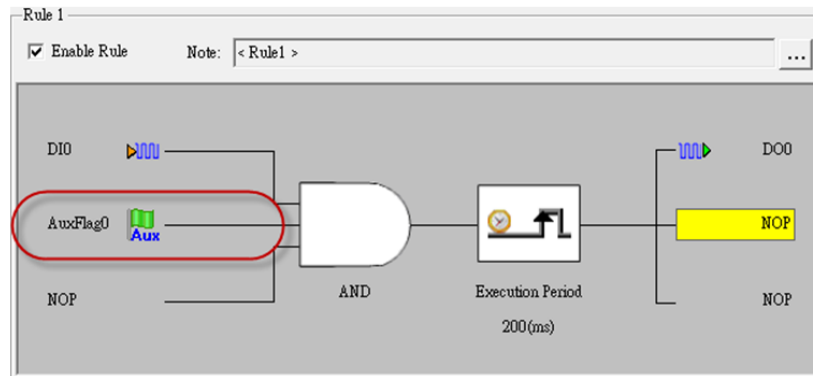
The pictures below demonstrate how it works.

GCL Internal Flag (AuxFlag)- Example

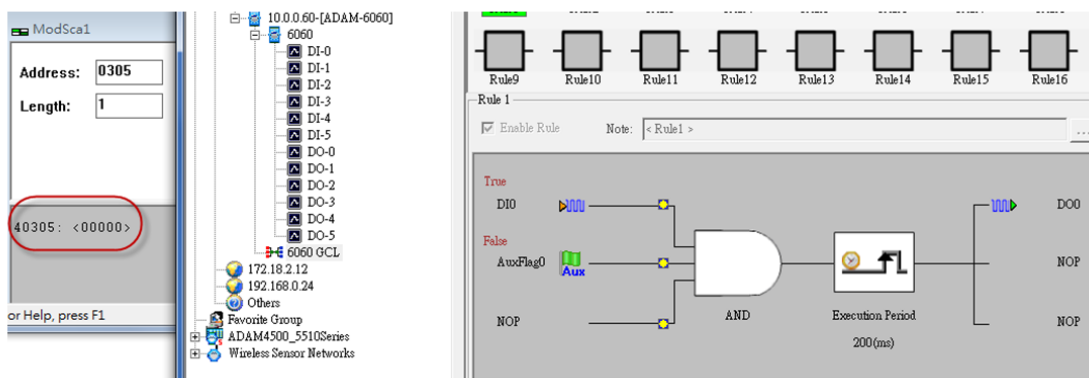
- **Condition True:**
 - Condition result is **TRUE** when internal flag value is **TRUE**
- **Condition False:**
 - Condition result is **TRUE** when internal flag value is **FALSE**



GCL Internal Flag (AuxFlag)- Example



GCL Internal Flag (AuxFlag)- Example



GCL Internal Flag (AuxFlag)- Example

