

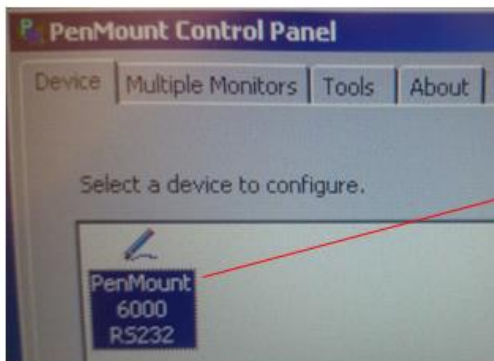
Advantech AE Technical Share Document

Date	2015 / 4 / 08	SR#	
Category	■ FAQ □ SOP	Related OS	Microsoft Windows7
Abstract	How to set positive trigger for touch function in TPC-1251T and TPC-1250H-N2BE		
Keyword	Positive touch , TPC-1251T,TPC-1551T,TPC-1250H-N2BE		
Related Product	TPC-651T,TPC-1251T,TPC-1551T,TPC-1250H-N2BE,TPC-1550H-N2BE		

■ Problem Description:

Customer wants to know how to set positive trigger for touch function in TPC in Windows7.

■ Brief Solution - Step by Step:



Open the PenMount Control Panel and choose PenMount 6000 RS232

Choose the setting -> click on touch

If the customer needs long press the panel , they may unclick "use press and hold as right click"

