

Advantech AE Technical Share Document

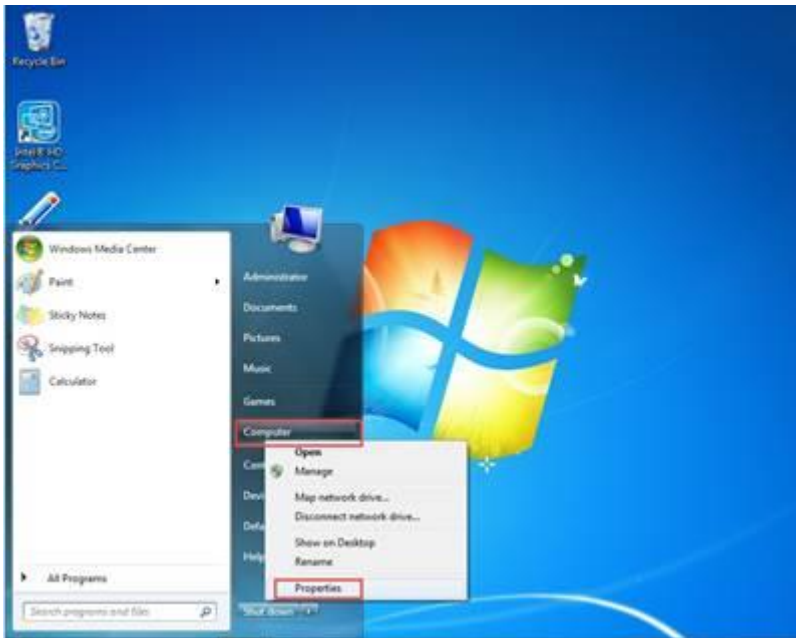
Date	2015 / 4 / 09	SR#	
Category	■ FAQ □ SOP	Related OS	WES7P
Abstract	How to increase the CPU loading in TPC-1551T with WES7		
Keyword	TPC-1251T,TPC-1551T, WES7, high CPU loading		
Related Product	TPC-651T,TPC-1251T,TPC-1551T		

■ **Problem Description:**

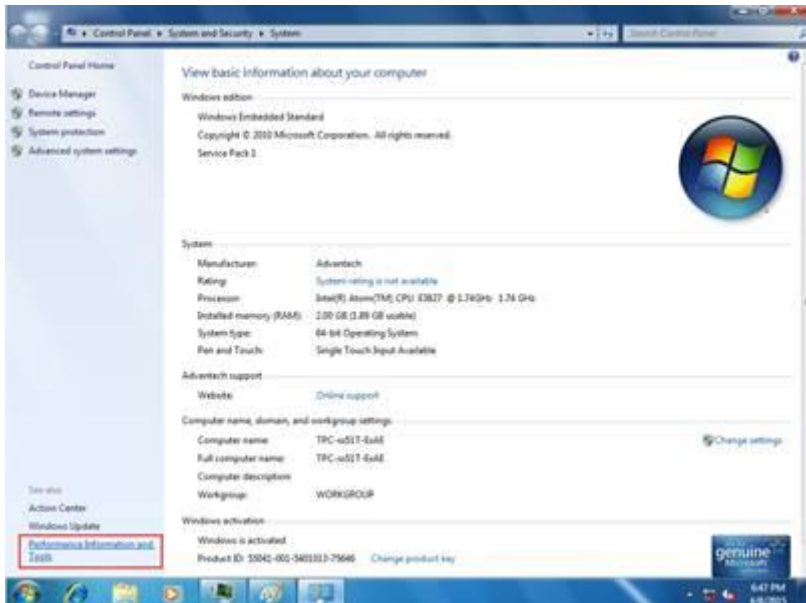
Customer's AP in TPC-1551T with WES7 will cause high CPU loading up to 80%.

■ **Brief Solution - Step by Step:**

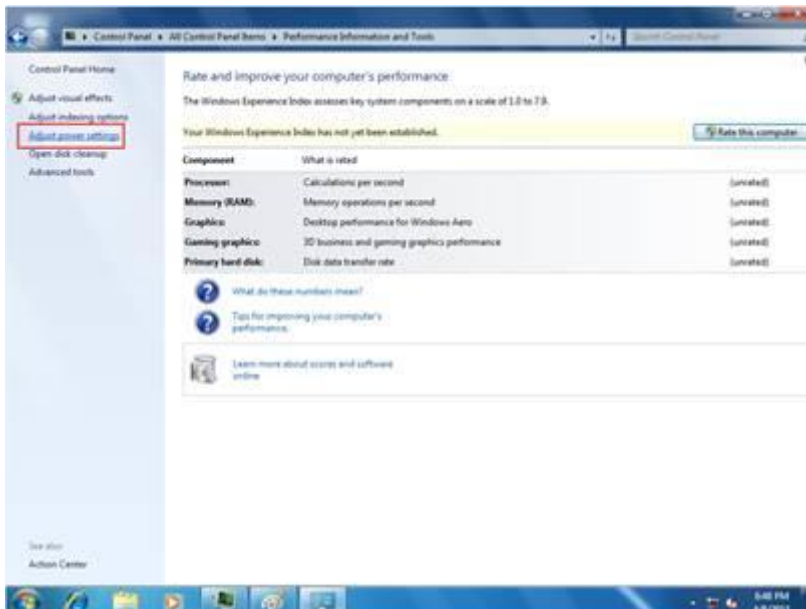
1. Click the start up -> Computer -> property



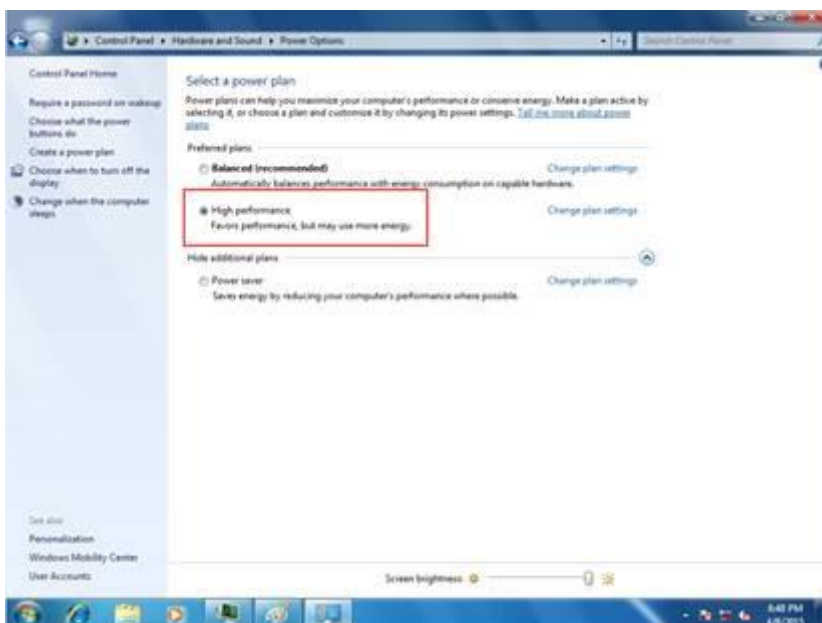
2. Select the performance and tool



3. Select the power setting



4. Click the High performance, if you can't find this option , click the “hide additional plans”



5. The CPU loading decrease from 80% to 10% with the customer's AP opening.

6. Reference