

Advantech AE Technical Share Document

Date	2015 / 3 / 20	SR#	
Category	<input type="checkbox"/> FAQ <input checked="" type="checkbox"/> SOP	Related OS	Microsoft Windows7 SP1
Abstract	How to use the Sierra Wireless AirPrime 4G Module to send SMS from WebAccess		
Keyword	Sierra Wireless AirPrime, 4G, Module, SMS, Message, alarm, WebAccess, SCADA		
Related Product	WebAccess V7.2, V8.0 after 2014/11/03 version		

■ **Problem Description:**

When the alarm occurs, WebAccess can send messages to mobile phone that defined in WebAccess through AlarmCaller-SMS with standard AT Command or a specific message server such as Taiwan CHT. Here we use a 4G module to show how to configure the function.

The Sierra Module has Mini-PCle interface, so you can use it in UNO or the computer has Mini-PCle interface, as shown in Picture1.

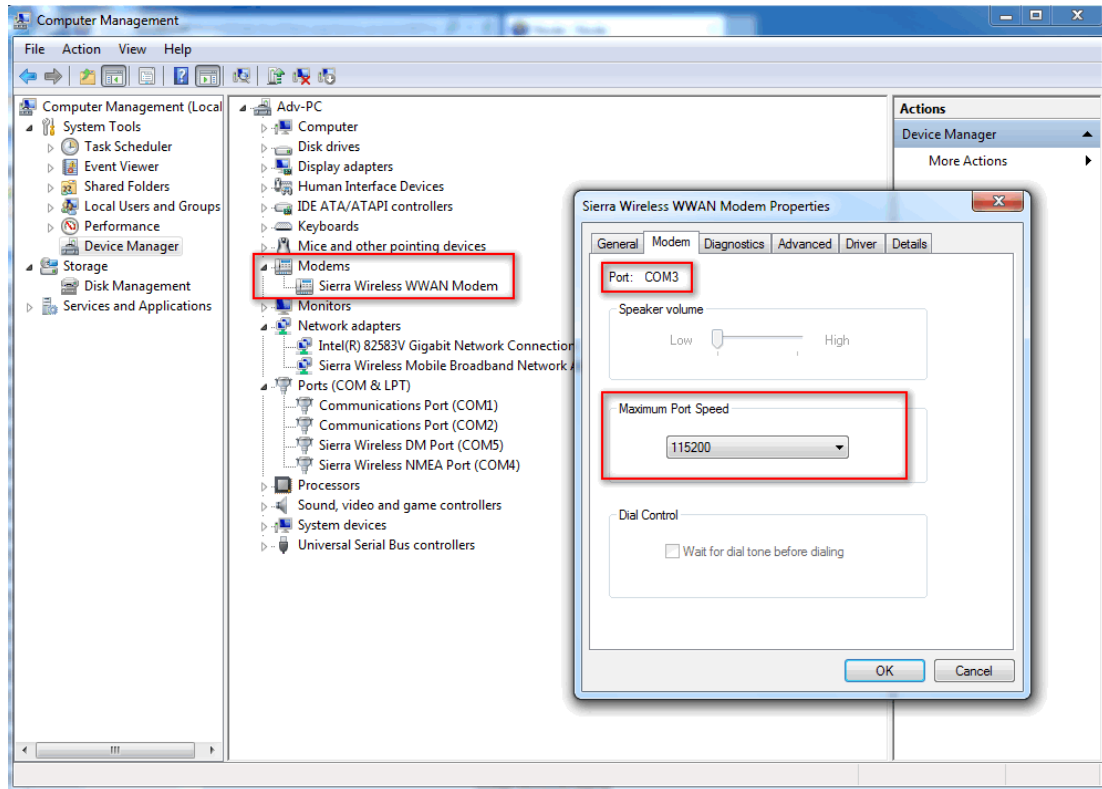


Picutre1

■ **Brief Solution - Step by Step:**

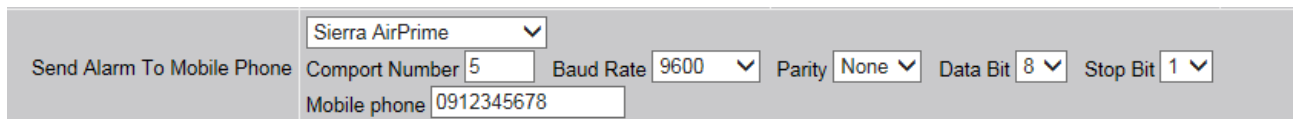
Step1: Download the newest version from WebAccess WebSite, install it ,then you can get the new AirPrime driver.

Step2: When you install the Sierra 4G Module driver in your PC, you can see some new ports in device management, enter the properties of the modem, we need to know which Comport does it use, and the port setting, as shown in Picture2.



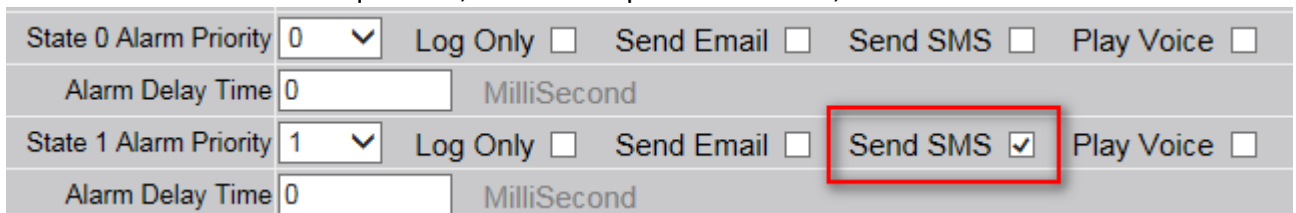
Picture2

Step3: enter the SCADA Node configuration interface in WebAccess, set “Send Alarm To Mobile Phone” property, as shown in Picture3, The mobile phone set in SCADA Node Property will receive all alarm messages from this SCADA Node.



Picture3

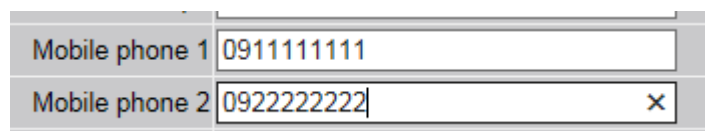
Step4: After set this property, we need to set tag alarm property, for example, for a digital tag, I set to produce an alarm when it is equal to 1, check the option “send SMS”, as shown in Picture4:



Picture4

Then I can set two phone numbers for each tag to receive alarm messages, as shown in Picture5.

Step5: Start the kernel, when the alarm occurs, will play voice.



Picture4

If you don't want to send three people, the mobile phone can be null.

But if you need more people to receive the alarm messages, you can use the AlarmManagementSystem. In AlarmManagementSystem, you can add worker in "Worker Maintenance" with their phone number and Email, if you configure the SMS machine and Email SMTP Server, when alarm occurs, they will receive sll message.

