

Advantech AE Technical Share Document

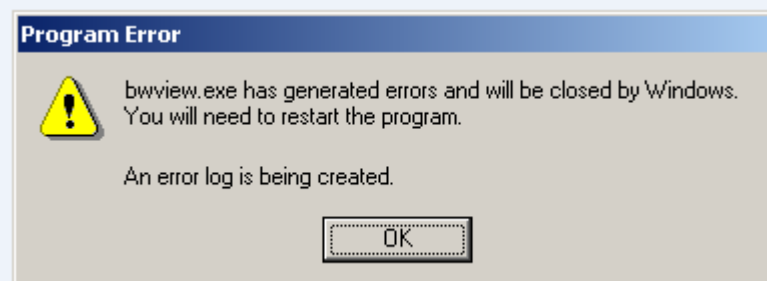
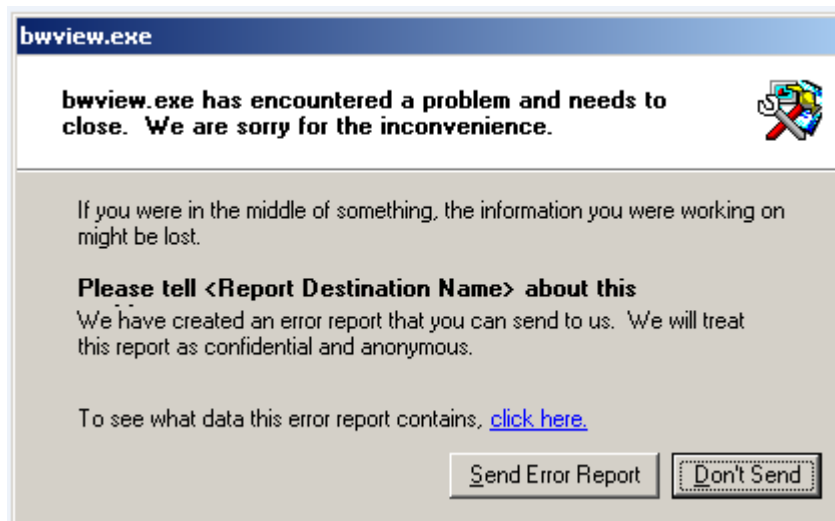
Date	2015 / 7 / 14	SR#	
Category	<input checked="" type="checkbox"/> FAQ <input type="checkbox"/> SOP	Related OS	Microsoft Windows7
Abstract	WebAccess monitors ADAM-6060 AuxFlag (internal tag)		
Keyword	ADAM-6060, AuxFlag		
Related Product	N/A		

■ **Problem Description:**

XPE is cropped WinXP system, many UNO are equipped with this system. However, due to the cutting process control or version control problems, some versions of the XPE will cause some software error. As we discovered in a case, the UNO-2174A-AE33E / ADAM5560WA author XPE system runs WebAccess engineering mistakes.

■ **Brief Solution - Step by Step:**

1. Error: The process of installing WebAccess is relatively smooth, does not complain; and download the new configuration WebAccess project will not be a problem. But when you run the project, WebAccess will complain :



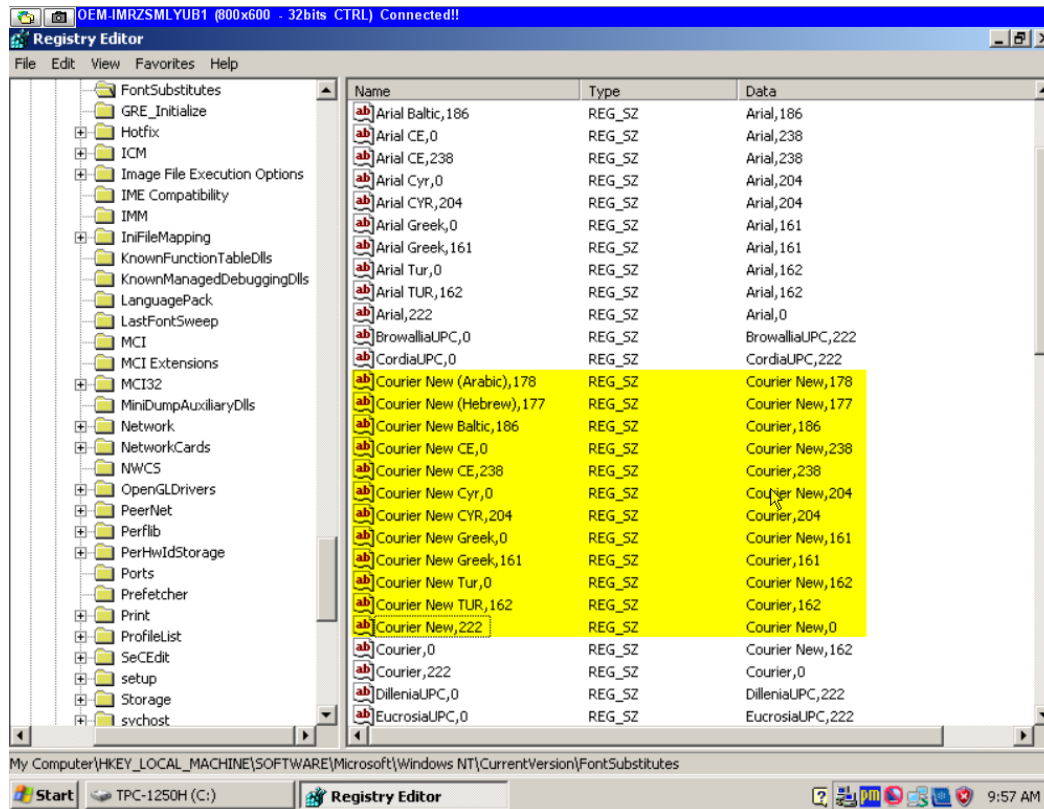
This causes DataCore continuously restart and unable to run WebAccess properly.

2. The cause of the problem: This problem is due to XPE crop, some Courier New font error registered for the Courier font, resulting in bwview.exe WebAccess fonts can not run properly, so an error

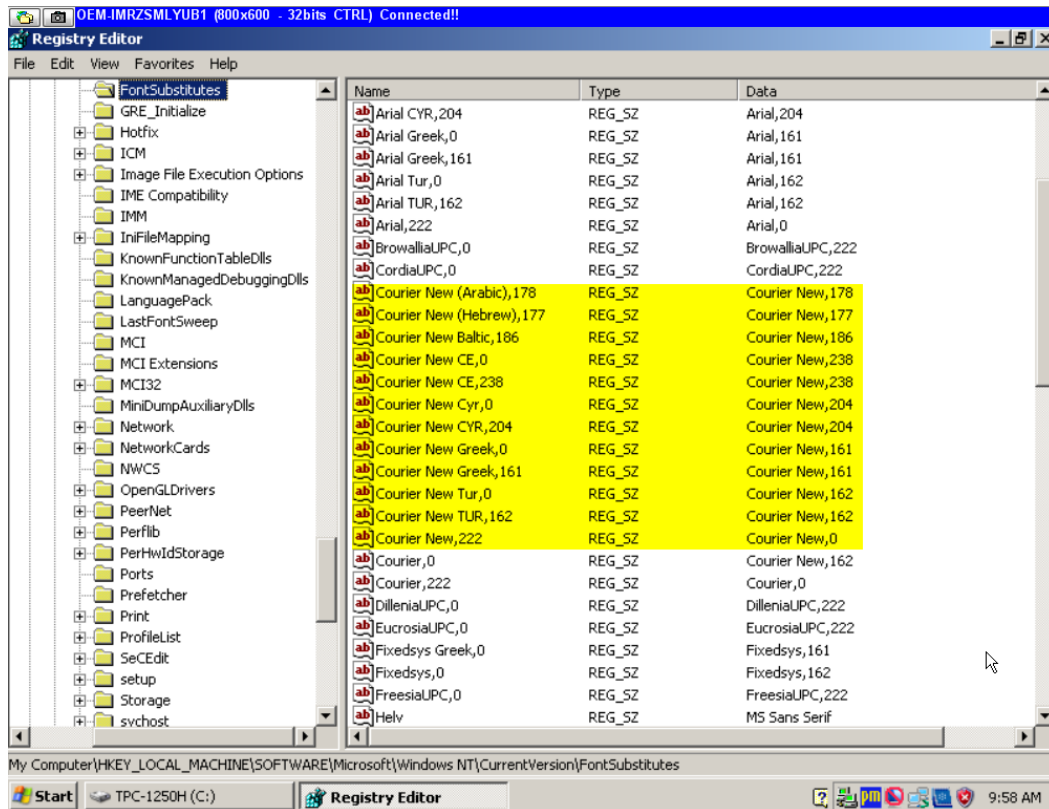
3. Solution :

- 1) Enter "regedit" in "Start Menu" -> "Run"
- 2) Find the following: HKEY_LOCAL_MACHINE\SOFTWARE\Microsoft\Windows NT\CurrentVersion\FontSubstitutes ;
- 3) Find the following keywords.

Some might be "Courier New" and some are "Courier" ;



- 4) Replace "Courier" to "Courier New"
- Please refer to the following print screen image



5) Restart computer and WebAccess will be able to run properly.