

Date	2015/07/21	SR#	1-2138208957
Category	<input type="checkbox"/> FAQ <input checked="" type="checkbox"/> SOP	Related OS	N/A
Abstract	Configure ADAM-6100EI Module in RSLogix 5000		
Keyword	ADAM, EthernetIP, RSLogix,		
Related Product	ADAM-61XXEI Series		

■ **Problem Description:**

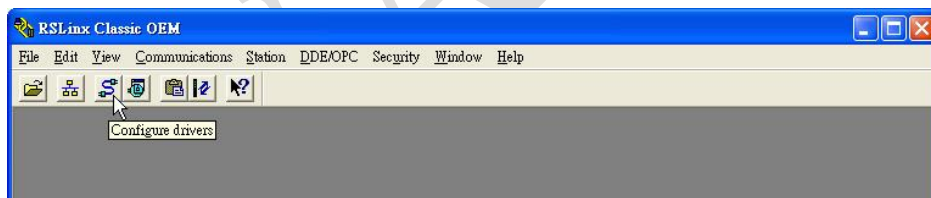
This document demonstrates the SOP of how to configure ADAM-6100EI Module in RSLogix 5000

■ **Brief Solution - Step by Step:**

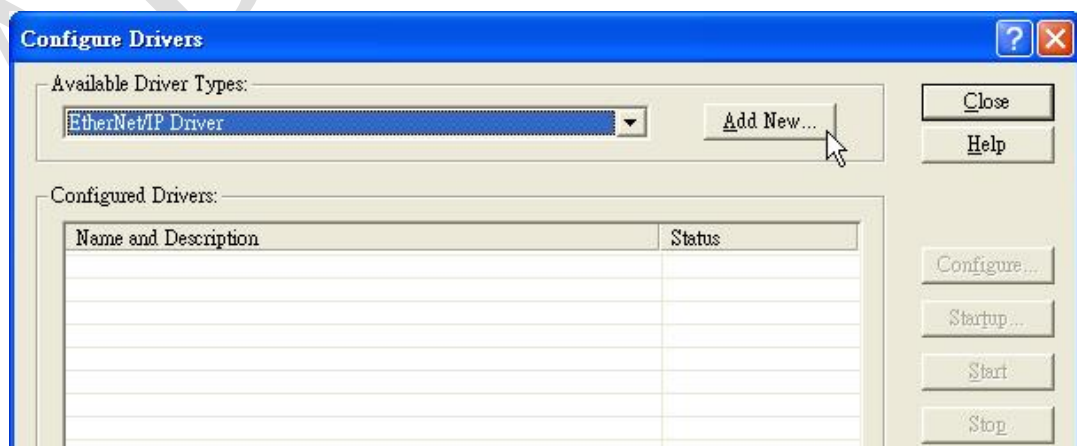
- a) Use RSLinx to Configure Driver
- b) Add Controller and ADAM-6100EI Module in RSLogix
- c) Add ADAM-6100EI Module by Utility

a) Use RSLinx to Configure Driver

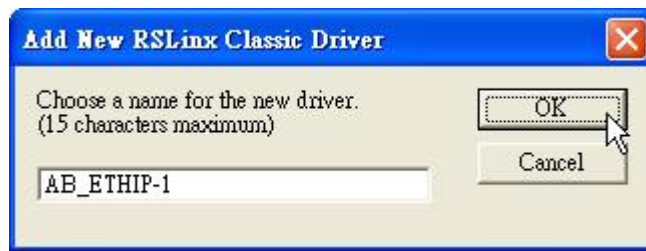
1. Open RSLinx and click [Configure drivers] button



2. Select [Available Driver Types: EtherNet/IP Driver] and click [Add New...]



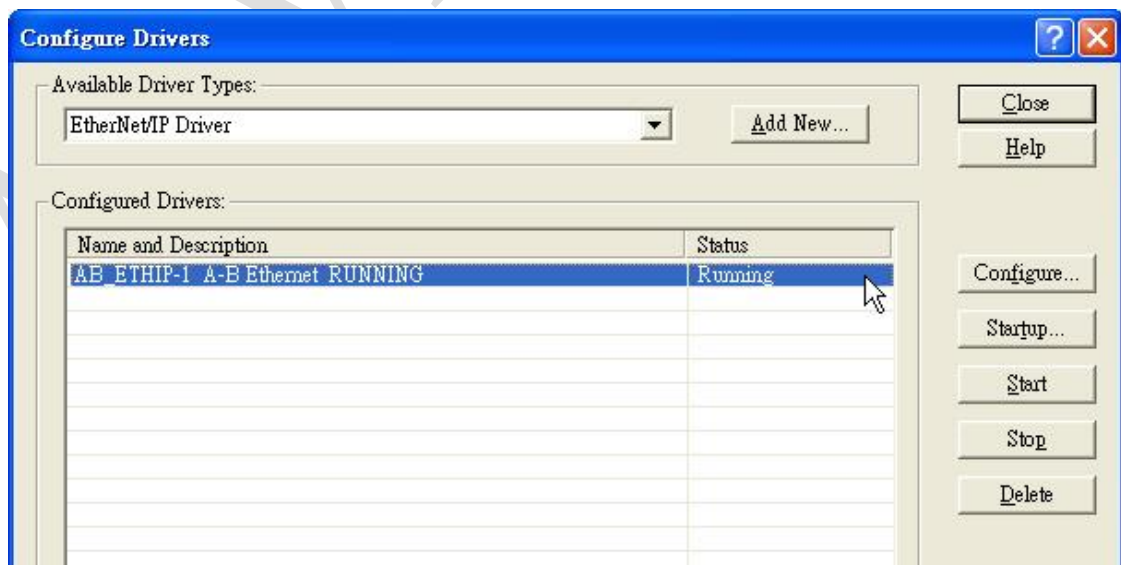
3. Assign a name and click [OK]



4. Choose the network card that connected to PLC and click [OK]

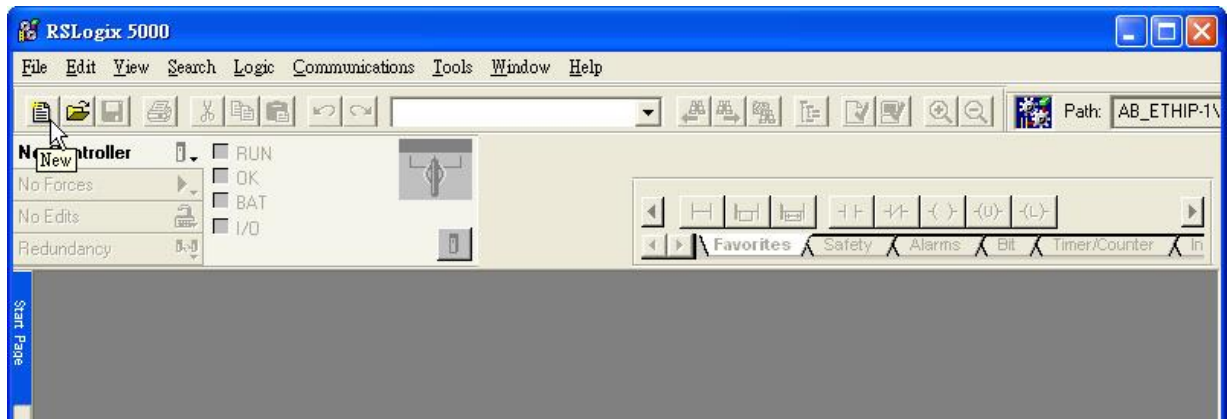


5. The driver have been added and running

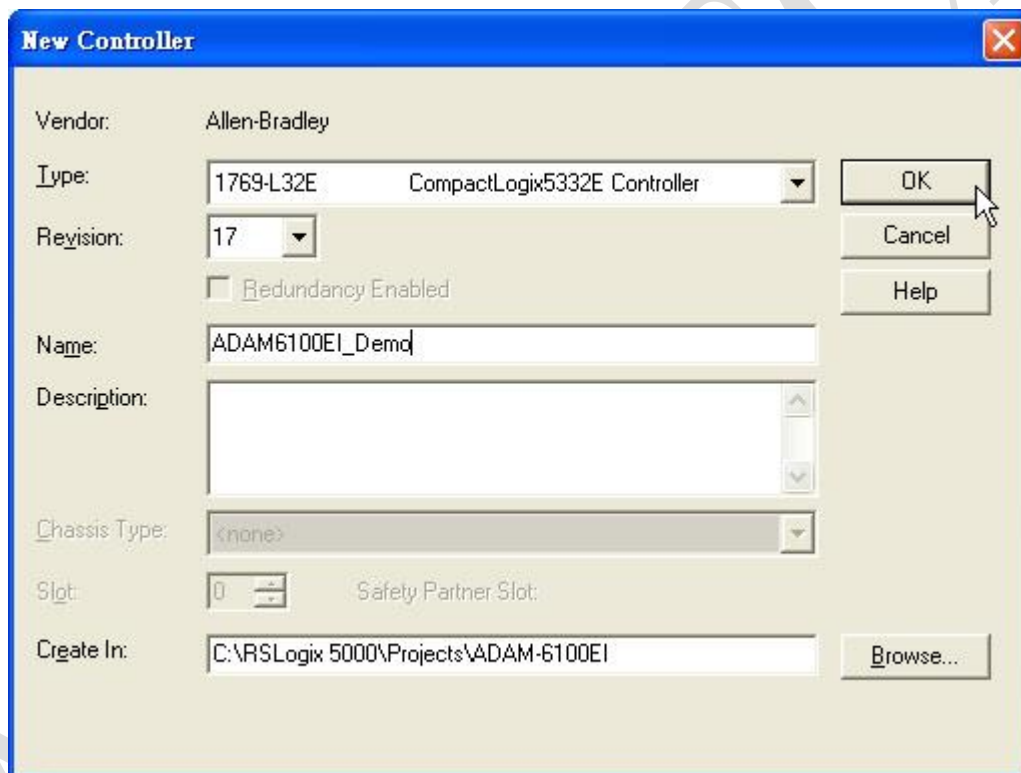


b) Add Controller and ADAM-6100EI Module in RSLogix

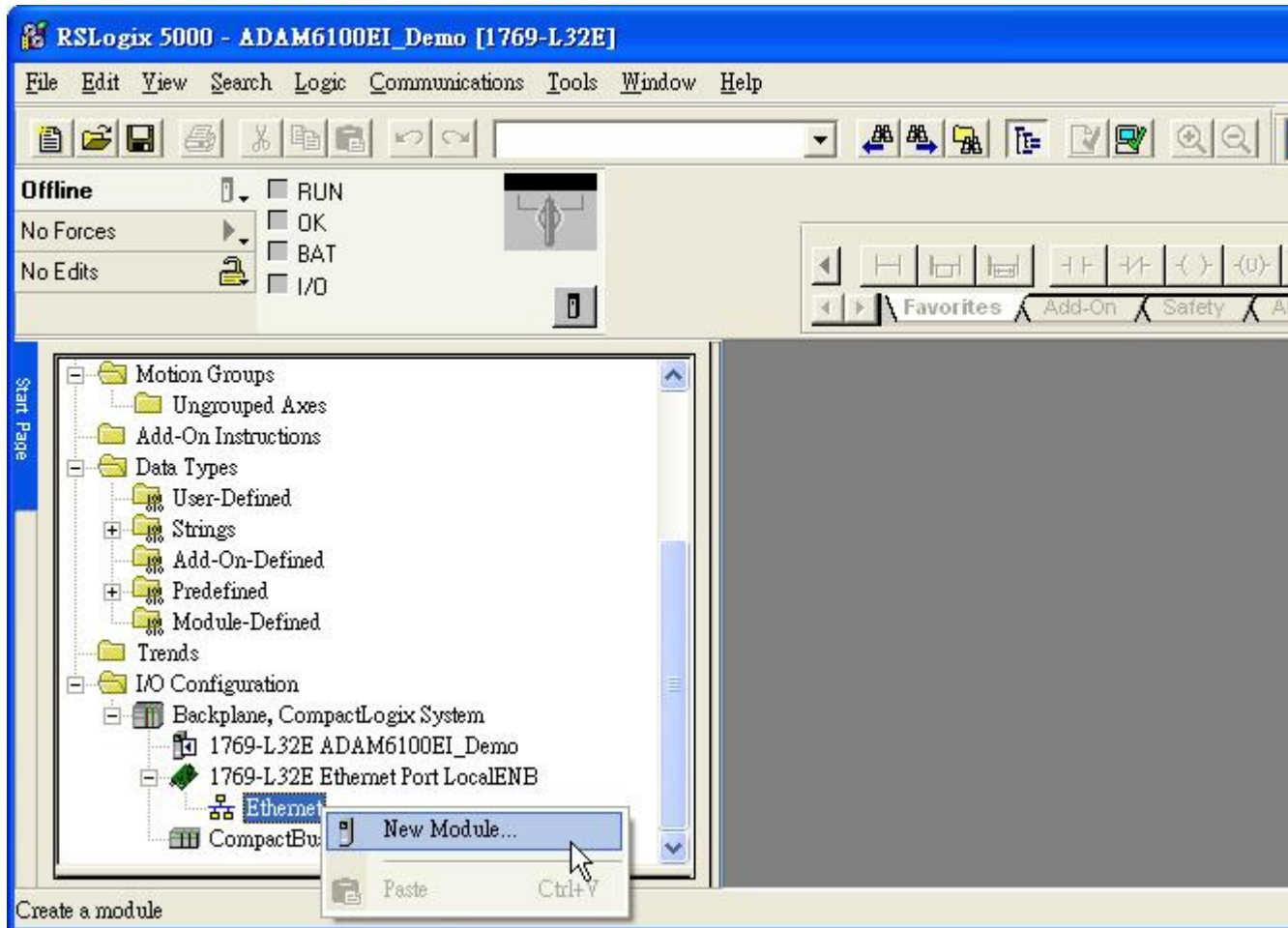
1. Open RSLogix 5000 and click [New] button



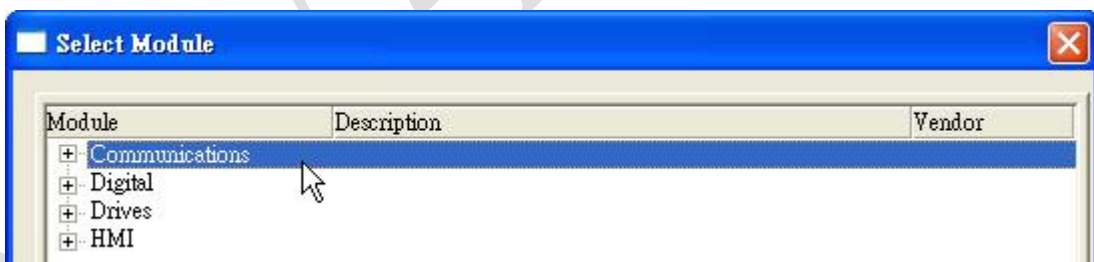
2. Select PLC type and give the project a name then click [OK]

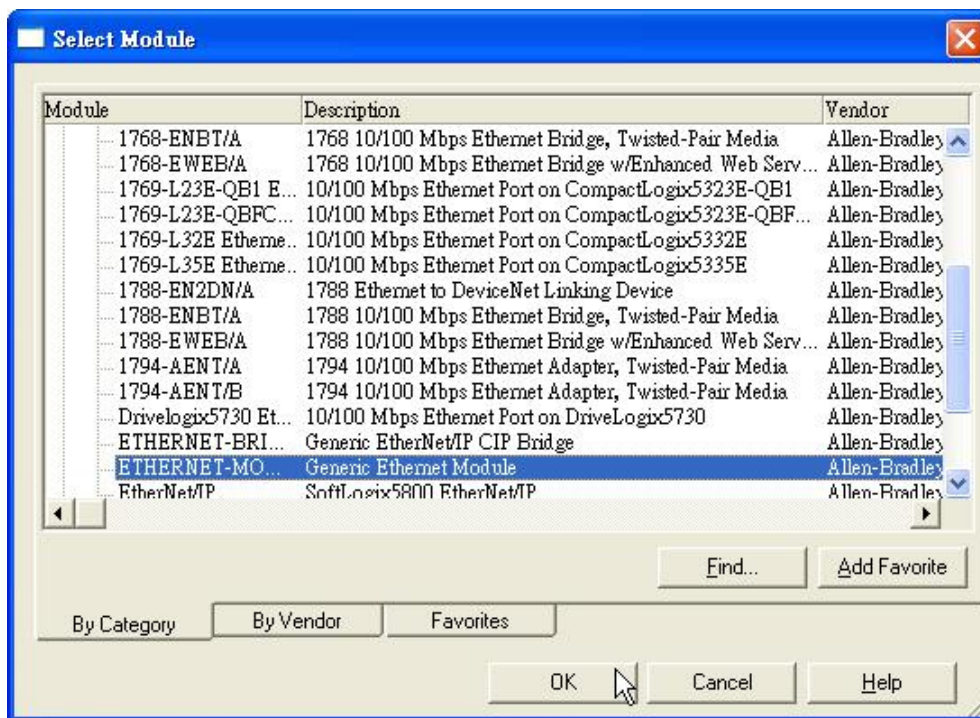


3. Right click [Ethernet] under PLC in the tree and click [New Module...]

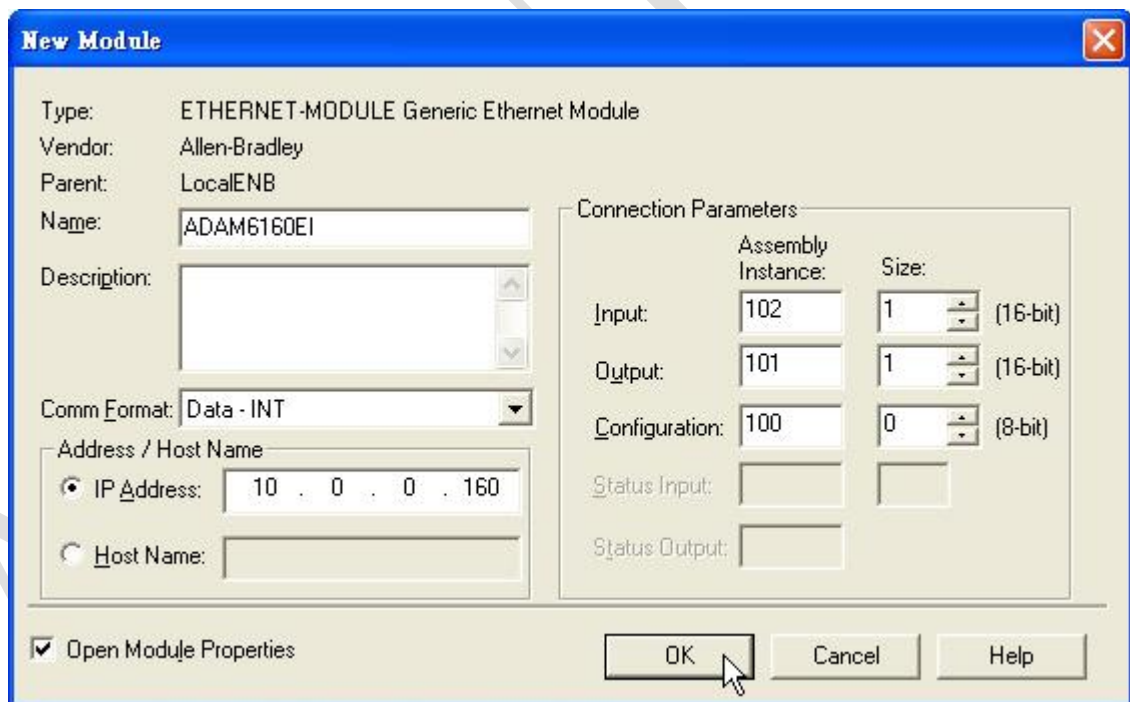


4. Choose [Communications \ ETHERNET-MODULE] and click [OK]

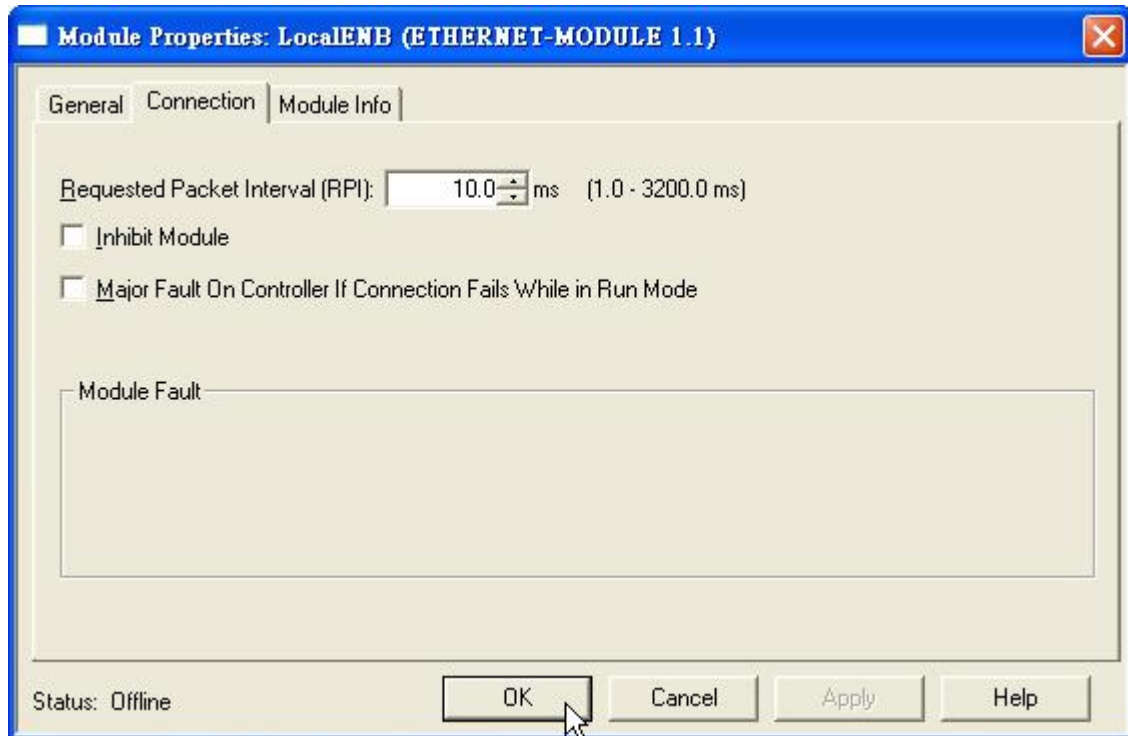




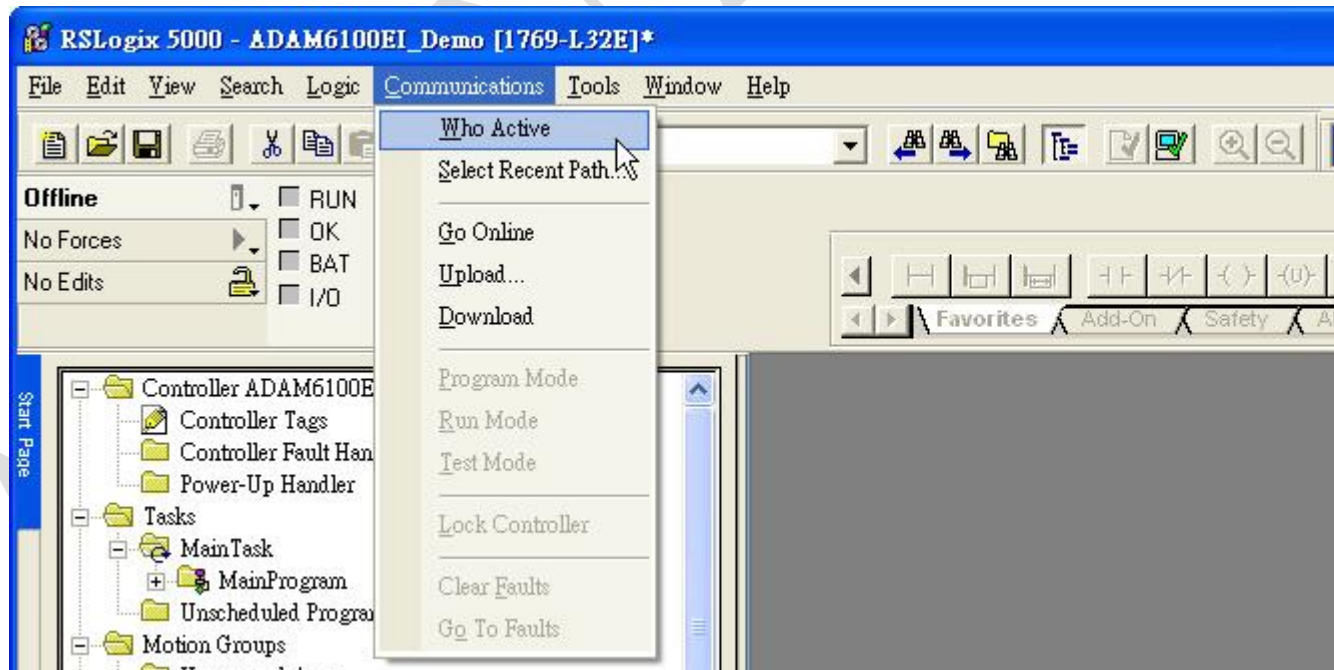
5. Give module a name. Here use ADAM-6160EI as example. Fill in the [Comm Format], [IP Address], and [Connection Parameters]. For digital I/O module, both input and output size are 1; for analog module, both size are 8. Click [OK]



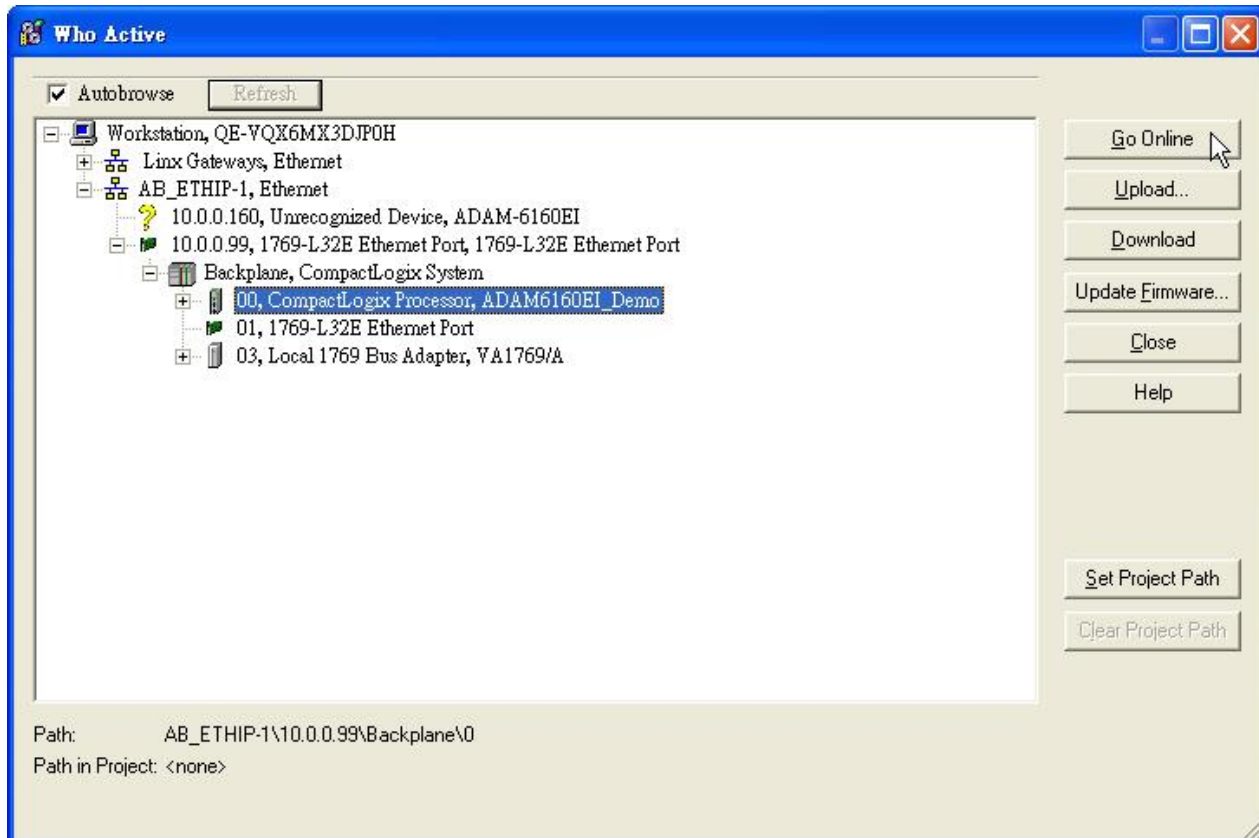
- Setting [Connection] and click [OK]



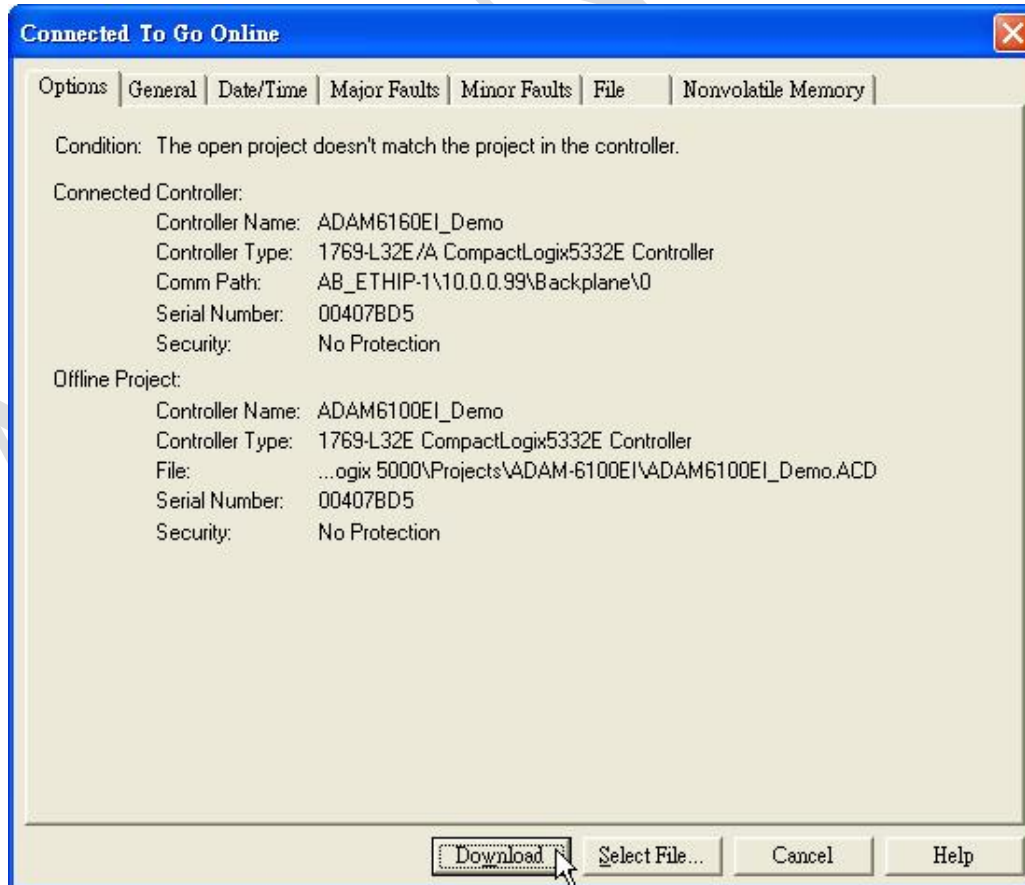
- Click [Communication \ Who Active]



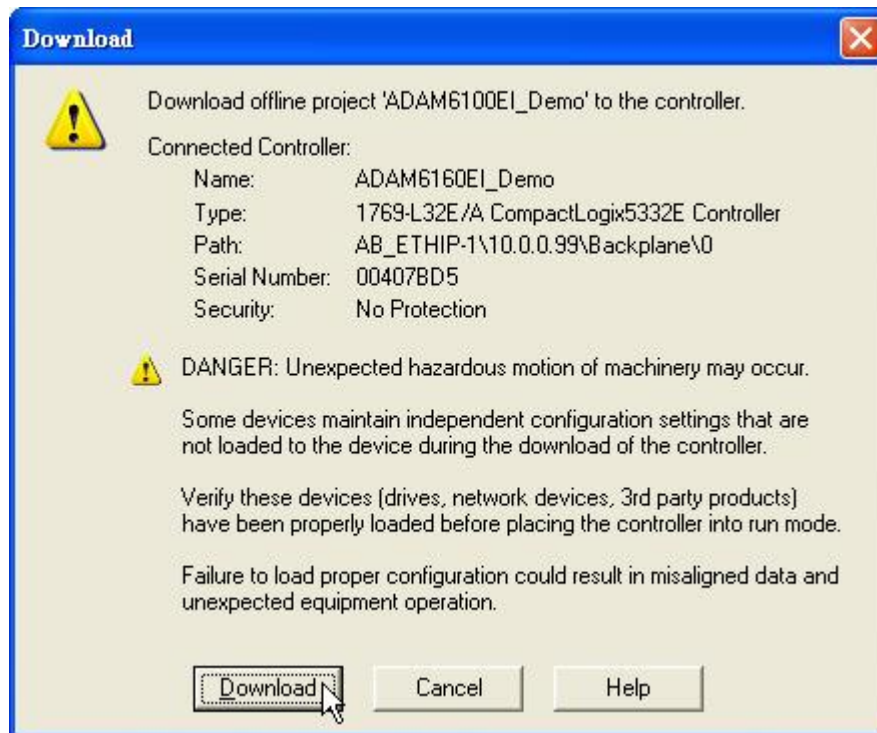
8. Choose the Processor and click [Go Online]



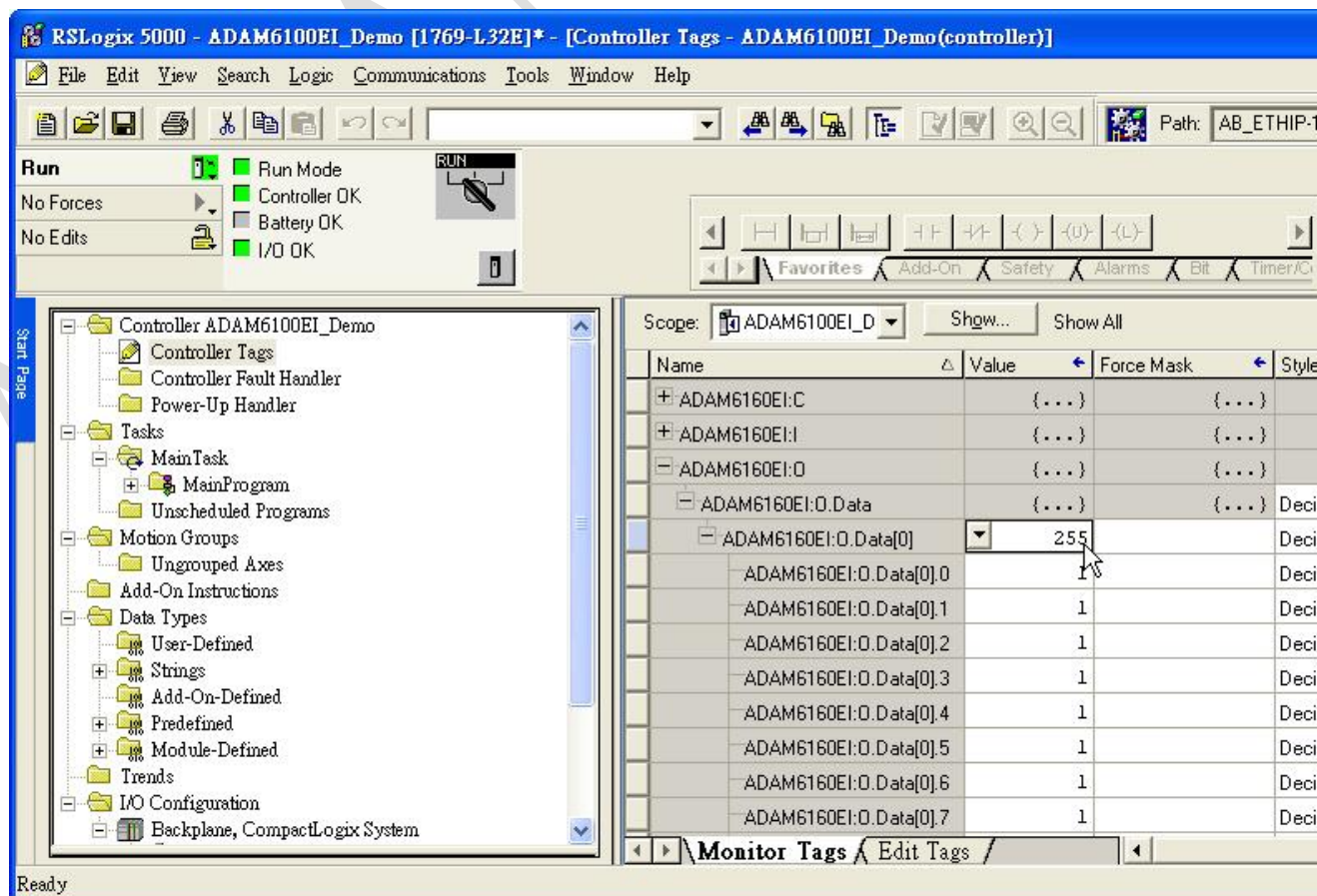
9. Click [Download]



10. Click [Download]

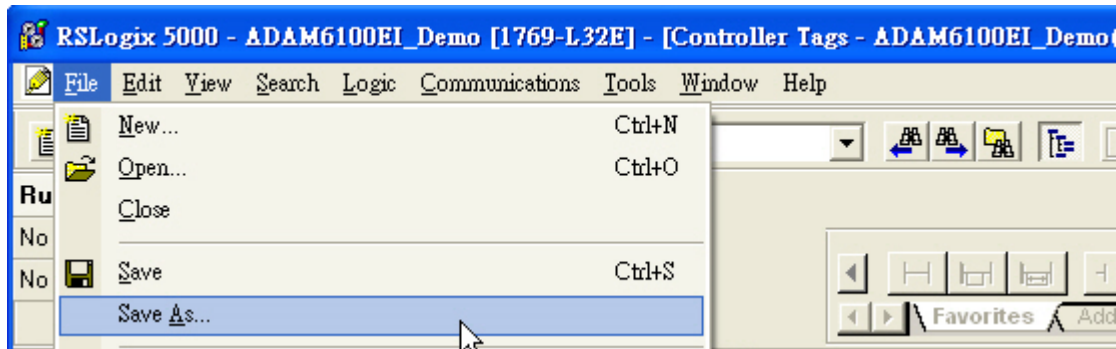


11. Switch PLC to [RUN] and change ADAM-6100EI module to [Normal] mode
12. Click [Controller Tags] to monitor the state of module
13. Give the value [255] to [ADAM6100EI:O.Data[0]] to on all the outputs

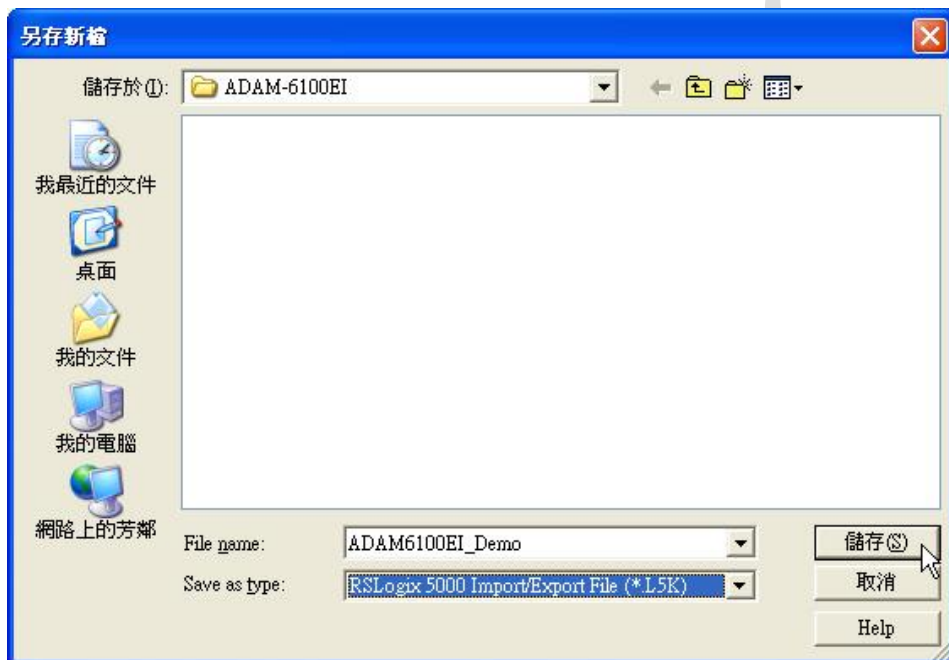


c) Add ADAM-6100EI Module by Utility

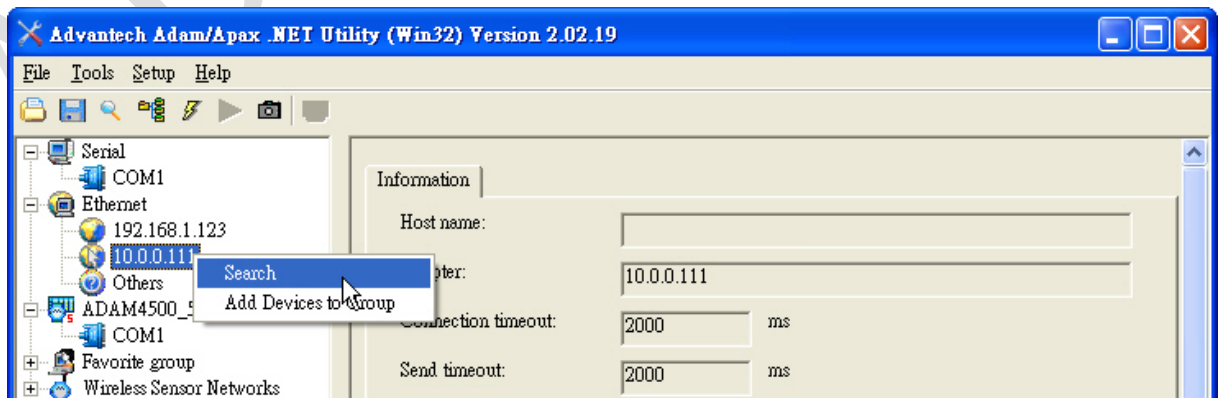
1. Click [File \ Save As...]



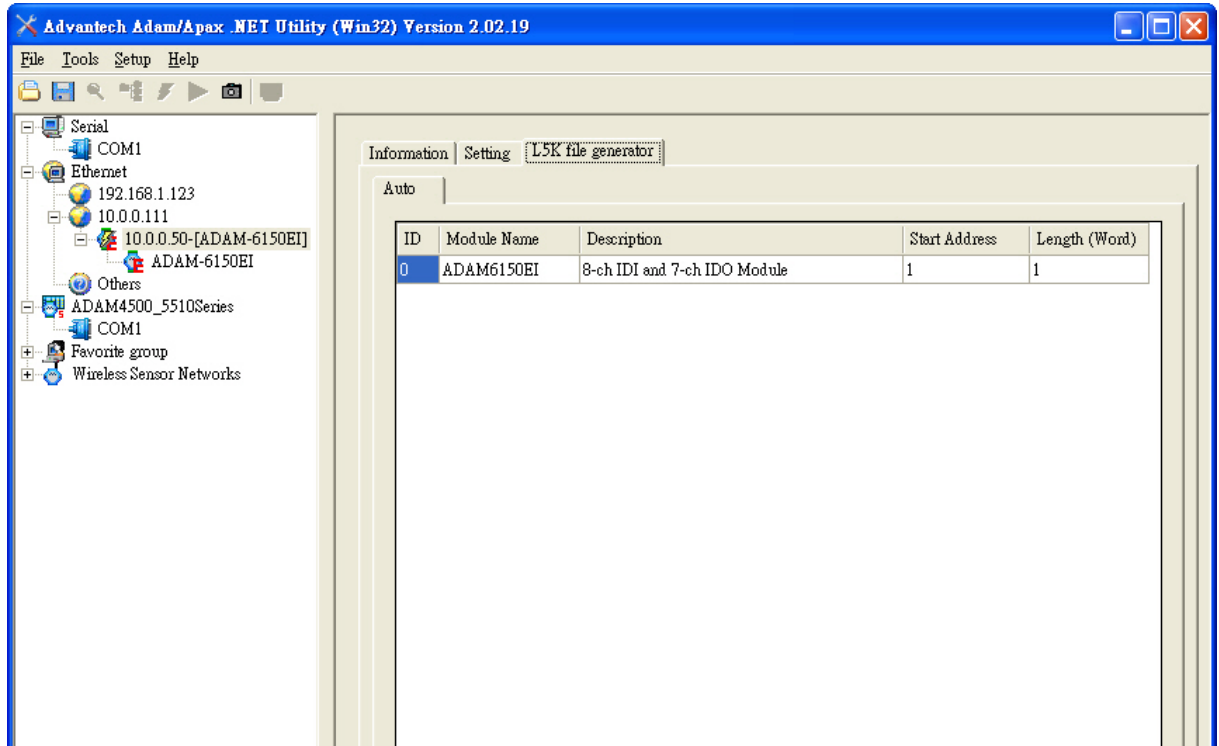
2. Save file as type [*.L5K] and click [Save]



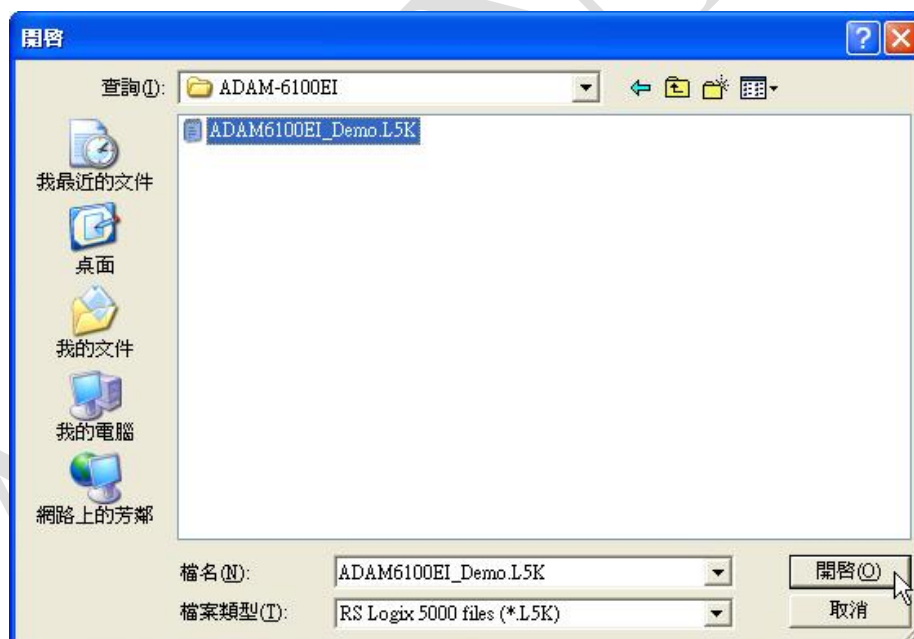
3. Switch ADAM-6100EI module to [Init] mode
4. Open Adam/Apax .NET Utility and search the module



- Click [Generate] button under [L5K file generator] tab



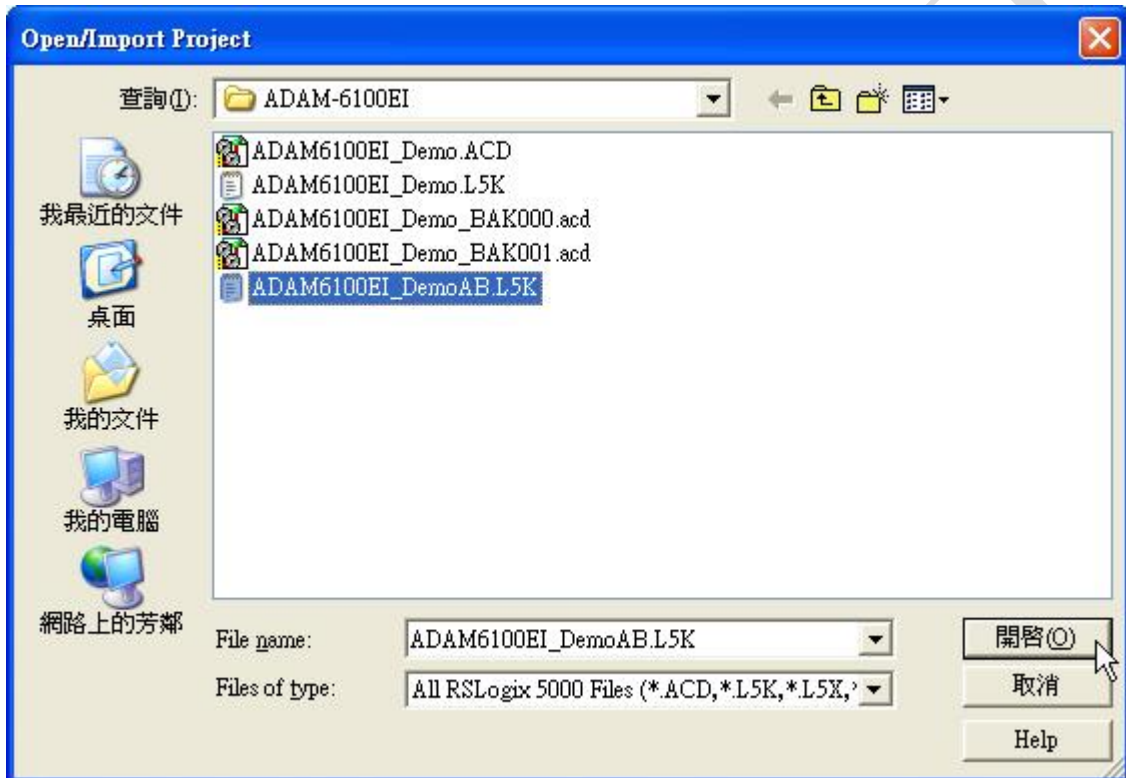
- Open the [*.L5K] file that have just been saved, and click [OK] to finish. Remember to switch the module



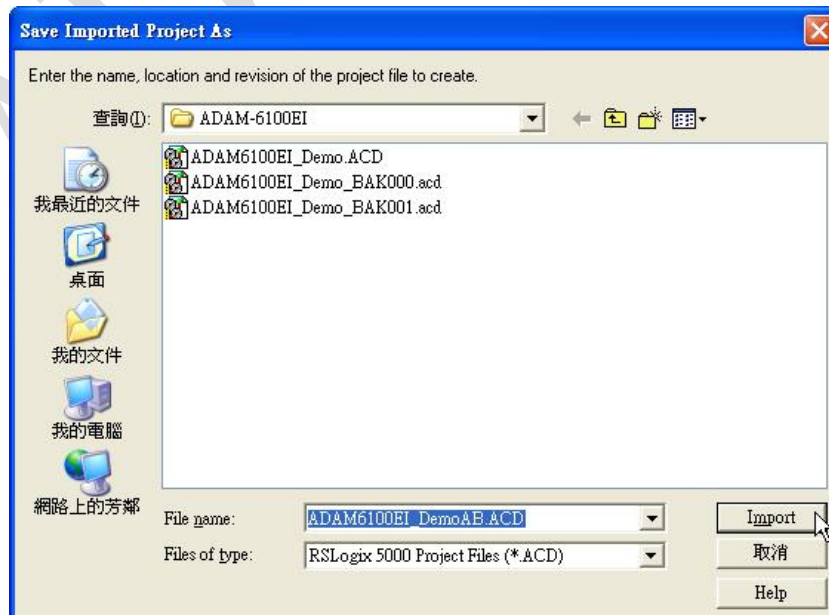
- Click [Open] button in RSLogix 5000



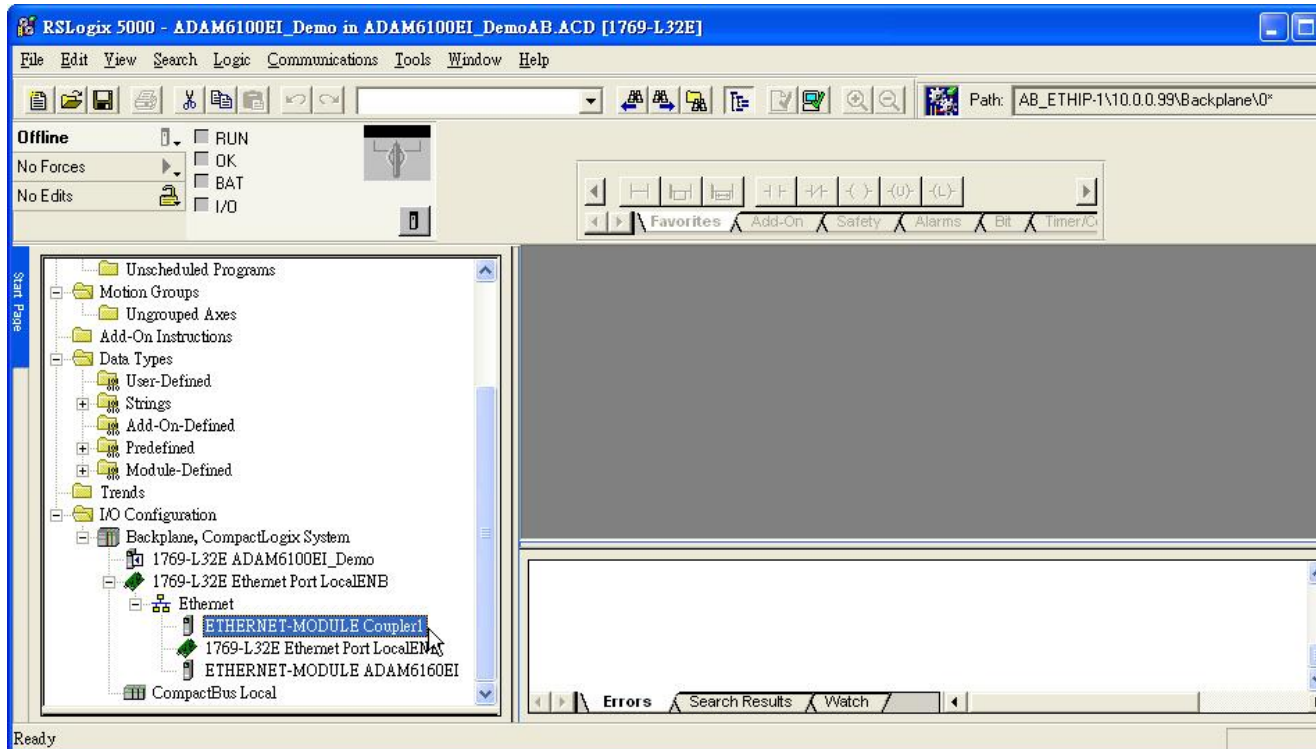
- Select the [*AB.L5K] file that have been add the word "AB" and click [Open]



- Click [Import] to save the imported file



- The module have been added and named as coupler double click the module to edit



- [Comm Format], [IP Address], and [Connection Parameters] have been set automatically, user can rename the module as following figure

