

Product:

AMAX-2050KW, ADAM-5550KW, UNO Series

Topic:

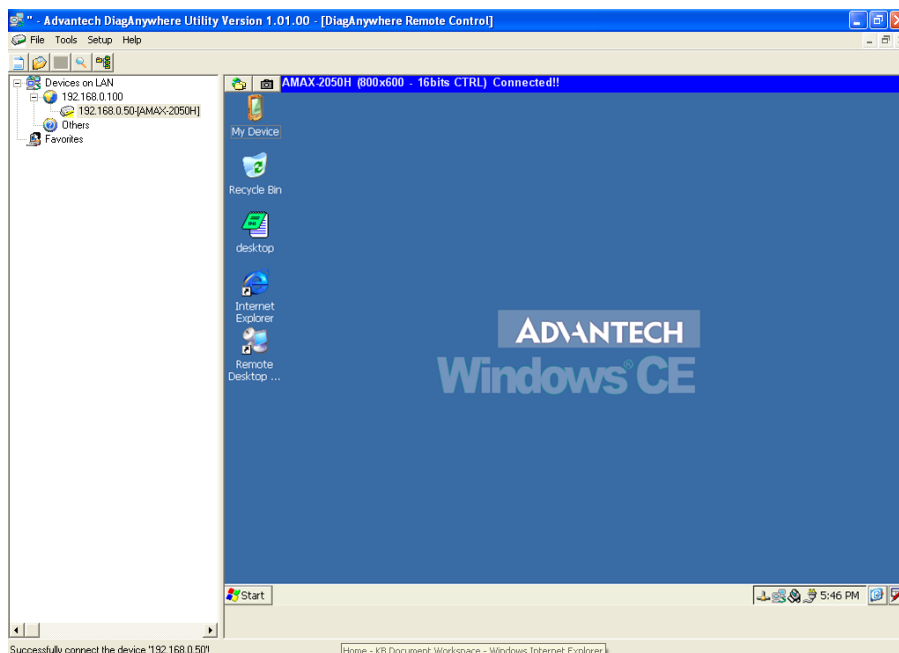
Accessing Devices in Other Domains through Advantech's DiagAnywhere

Description:

This document provides the steps of operation required to access devices that are outside the domain of the host computer.

Solution:

1. By default, DiagAnywhere can only access devices that are in the same domain. For example, the PC's IP is 192.168.0.100 and the devices' (AMAX-2050KW) is 192.168.0.50.

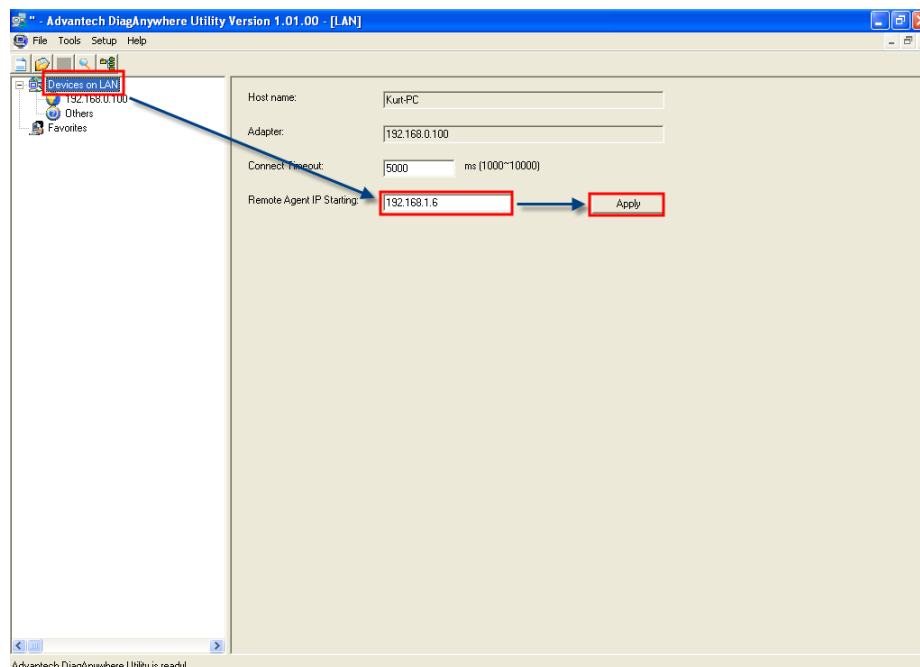


2. Enter any IP address that is in the same domain as the device you are trying to access. This IP address will serve as the starting point for the utility's search.

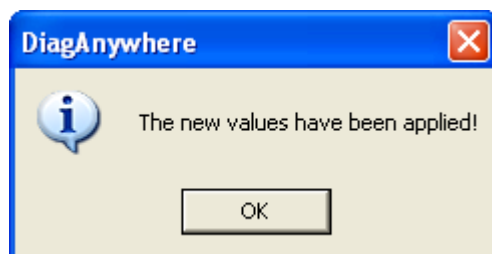
Example:

Host computer's IP:	192.168.0.100
External Network Domain:	192.168.1.XXX
Device IP's:	192.168.1.10
Starting Point of Search:	192.168.1.6

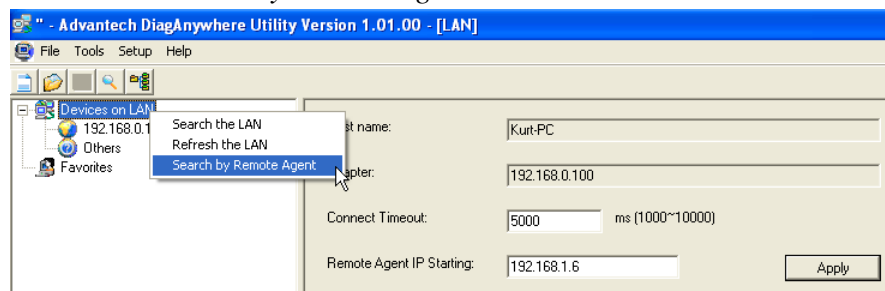
The IP address 192.168.1.6, 192.168.1.7, 192.168.1.8.....192.168.1.255 will be checked in sequence. In our particular example the device having IP address' 192.168.1.10 is found.



3. You'll see the window below after clicking "Apply," please click "OK."



4. After applying the *Remote Agent IP Starting*, right-click on the "Devices on LAN" and select "Search by Remote Agent."



- When the search is complete, devices found in the searched domain will be displayed under the *Others* category.

