

Product: KW Multiprog; PAC; ADAM-5510KW

Title: Changing the Time-out Settings of Advantech's Modbus Servers

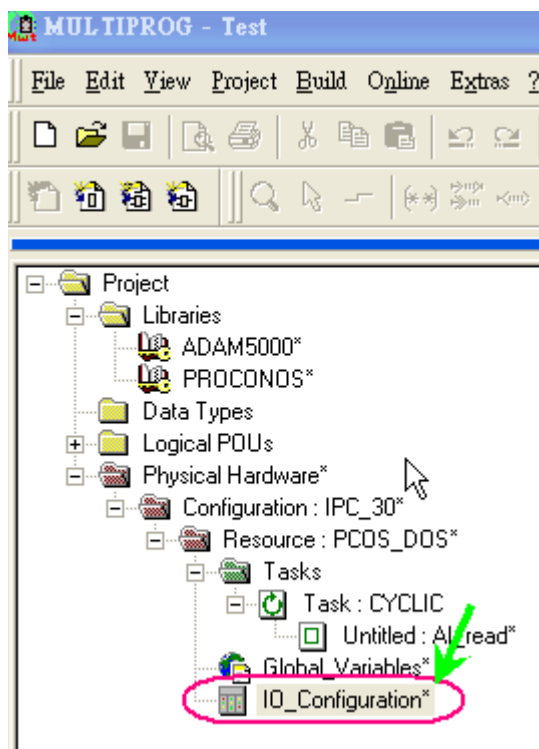
Description:

When experiencing bad communications, a Modbus client may occupy the Modbus server and take up valuable memory or server resources. Fortunately, ADAM-5510KW provides a timeout mechanism continues to fail during the setting timeout period the server will reset the communication driver.

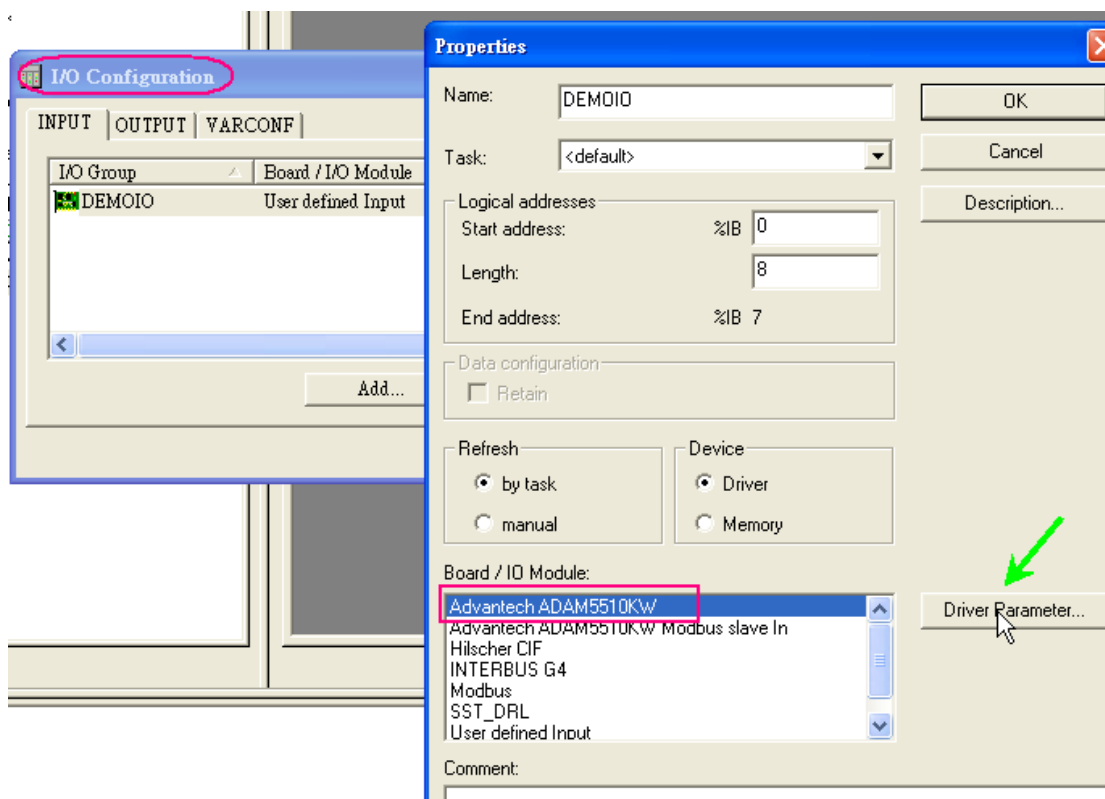
Solution:

To change the Modbus server timeout settings, follow the below steps:

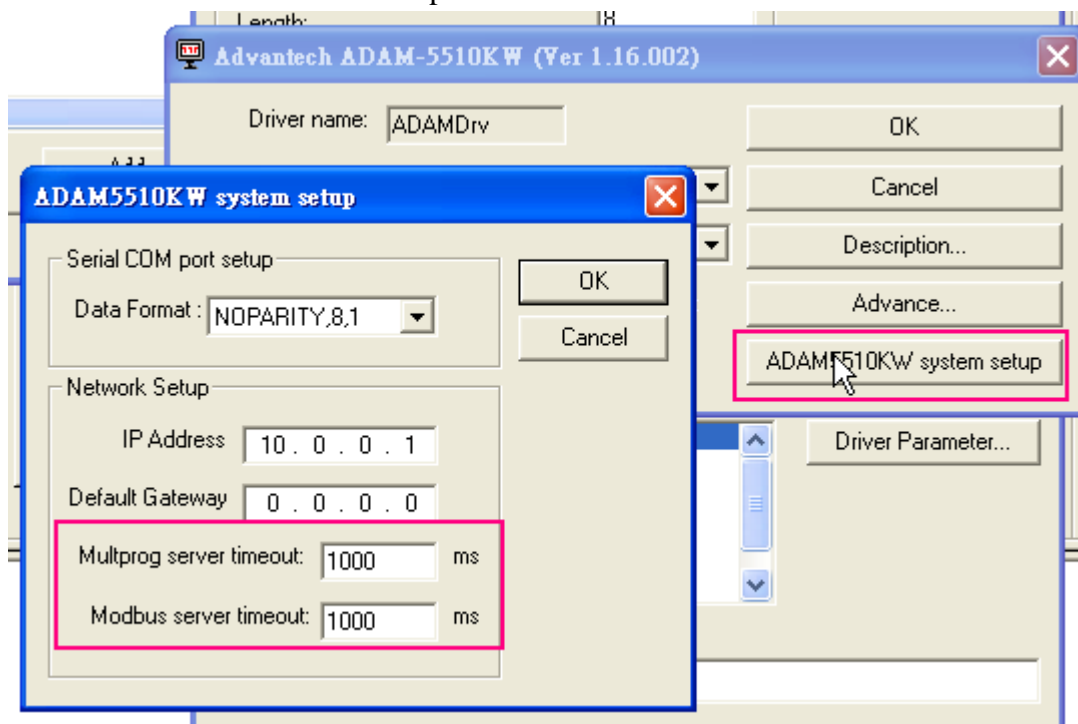
1. In a project, right click the IO_configuration, and select either Input or Output.



Select the 'Advantech Adam5510KW' driver and click 'driver Parameter'.

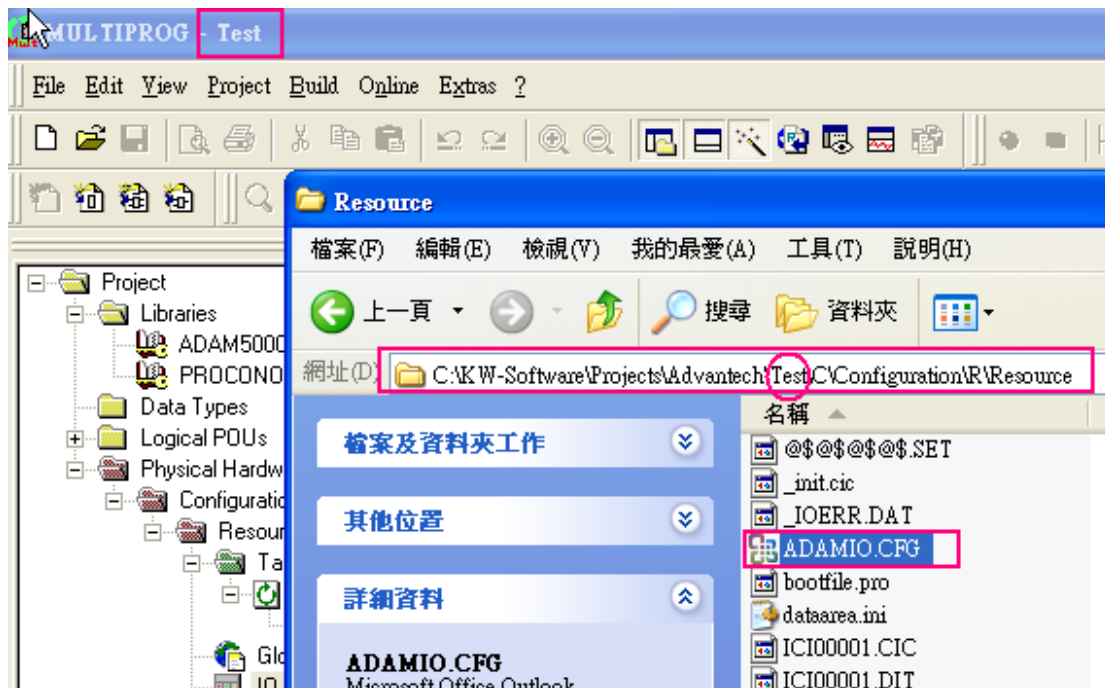


Select ADAM5510KW system setup, and the window will show several settings. The bottom item is where to setup Modbus server timeout.

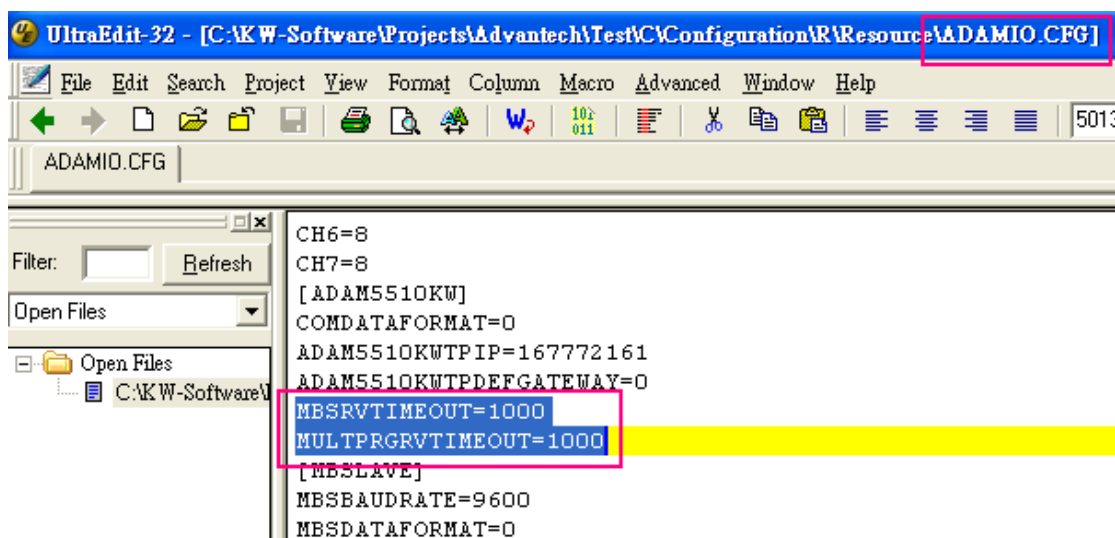


Be aware that the timeout setting can be only as small as 500ms. If users would like to have a smaller timeout, you may need to directly change project configuration.

The configuration file called ADAMIO.CFG is in the project folder under *C:\Configuration\R\Resource*.



Using text editor to open ADAMIO.CFG and the setting can be found and revised.



After changing the setting, this file has to be downloaded separately to the ADAM-5510KW. The following images show how to download the ADAMIO.CFG. In KW Multiprog, select the 'download file' and select the update ADAMIO.CFG file. Thus the setting will be implemented.

