

Product:

USB-4718

Topic:

Why the USB-4718 can not be used in WinCE?

Description:

This document will help the customer to upgrade firmware of the USB-4718 so that it can be workable in WinCE.

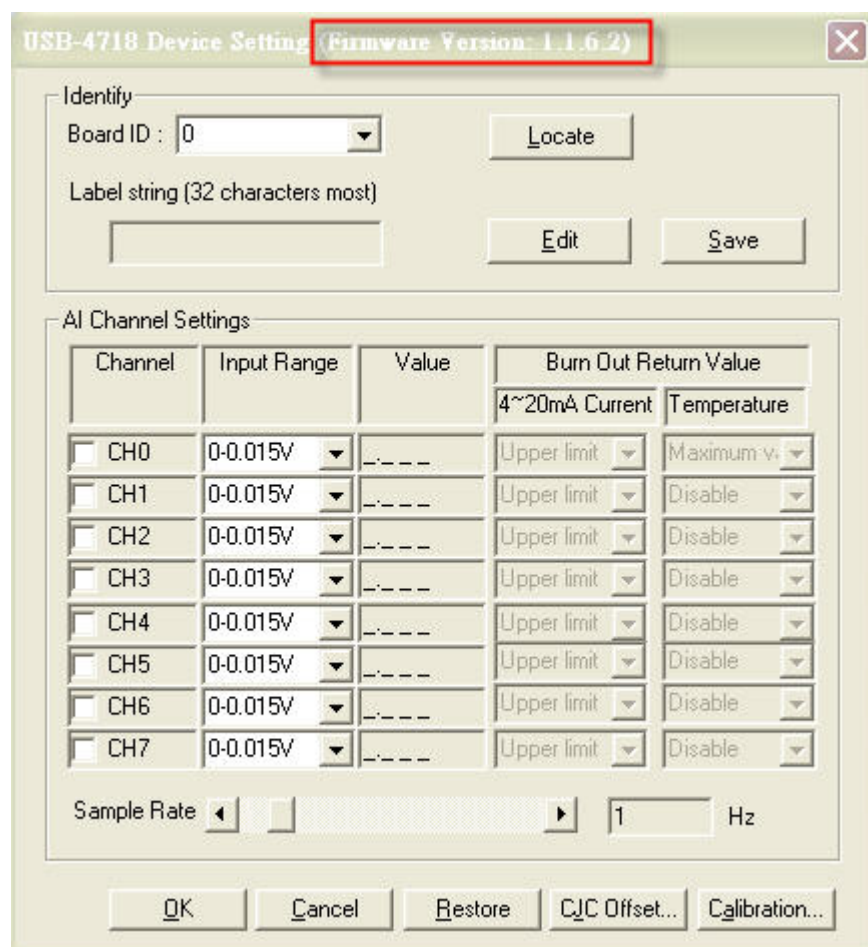
Solution:

If the customer would like to use the USB-4718 in WinCE, please upgrade the latest firmware (Version1.1.6.5) which is attached.

Please follow the steps to upgrade firmware and test the USB-4718,

1. Check whether the firmware of the USB-4718 is the latest or not.

Enter in Advantech Device Manager and select the setup of the USB-4718



2. If the firmware is older than Version 1.1.6.5, please open the USBDownload

Utility at the path: C:\Program Files\Advantech\Adsapi\Utilities\USBDownload
Select Device→Select Firmware Ver. 1.1.6.5→Click Download

The screenshot shows the 'USB Download' utility window. It is divided into three steps:

- Step 1: Select Device**
 - USB Device: 000: USB-4718 SwitchID=0
 - Firmware Version: 1.1.6.2
 - Select ... button
- Step 2: Select Firmware File**
 - File Name: D:\Advantech\Case\USB-4718\usb4718_V1165.bin
 - Load ... button
 - Device: USB-4718
 - Version: 1.1.6.5 (highlighted with a red box)
- Step 3: Download Firmware**
 - Progress bar: 0 %
 - Download button (highlighted with a red box)



3. After restart the USB-4718, the firmware will be the latest.

USB-4718 Device Setting (Firmware Version: 1.1.6.5)

Identify

Board ID : 0 Locate

Label string (32 characters most)

Edit Save

AI Channel Settings

Channel	Input Range	Value	Burn Out Return Value	
			4~20mA Current	Temperature
<input type="checkbox"/> CH0	0-0.015V	----	Upper limit	Maximum v.
<input type="checkbox"/> CH1	0-0.015V	----	Upper limit	Disable
<input type="checkbox"/> CH2	0-0.015V	----	Upper limit	Disable
<input type="checkbox"/> CH3	0-0.015V	----	Upper limit	Disable
<input type="checkbox"/> CH4	0-0.015V	----	Upper limit	Disable
<input type="checkbox"/> CH5	0-0.015V	----	Upper limit	Disable
<input type="checkbox"/> CH6	0-0.015V	----	Upper limit	Disable
<input type="checkbox"/> CH7	0-0.015V	----	Upper limit	Disable

Sample Rate 1 Hz

OK Cancel Restore CJC Offset... Calibration...

4. Now, the USB-4718 can work well in WinCE.

